

Australian Knitting

Yarn • Patterns

AUSTRALIA'S
FAVOURITE

23
PATTERNS
TO KNIT

EASY TO FOLLOW
STEP-BY-STEP
INSTRUCTIONS

BEAUTIFUL
Crochet Ideas

MAKE YOUR OWN
PONCHOS, SHAWLS,
DRESSES AND SCARVES

HEAPS OF TIPS, TECHNIQUES AND IDEAS

CLICK
HERE
NEXT

alpaca ultimate yarn

Shop online - www.alpacultimate.com.au

02 6227 3158 / 04 2978 3575



100% Australian Alpaca
Large range of colours



1 ply - 2 ply - 4 ply - 8 ply - Boucle
Up to 22 colours available in balls and cones

Details and Patterns available on our website

CLICK
HERE
PREV.

From the Team

The spring edition of **Australian Knitting** features the best designs and patterns to lead you into a new season. With the warmer weather on its way, it's time to brighten your wardrobe with fun and colourful garments. In this issue, you will find plenty of wonderful lightweight patterns ranging from dresses, cardigans and shawls, through to children's clothing and beanies which are perfect for spring. We stepped outside into the fresh air to take advantage of the sun and shoot our latest knitted collection. We hope you enjoy creating the beautiful new designs and taking on spring in style. A new issue of Australian Knitting is on sale every 12 weeks, so keep an eye out at your local newsagent. Taking out a subscription will ensure you don't miss out on any issue; you'll enjoy savings and each magazine will be delivered directly to you.

A special thanks to Aaron Attard for the use of his 1989 school bus which he is in the process of restoring.

We always enjoy hearing from you, so please send us an email or letter. Please send emails to simon@wpco.com.au or mail to Woodlands Publishing PO Box 8035 Glenmore Park 2745.

Happy knitting!

Simon and the team



**AUSTRALIAN
ALPACA**

tailored*strands*
luxurious knitting yarns

- Luxuriously soft and versatile.
- Stylish, elegant and light.
- Your imagination can be your springboard.
- New Stockist enquiries welcome.



Contact Tailored Strands or ask at your local wool retailer

p (03) 5345 6169 • f (03) 5345 6187
PO Box 368 Creswick Victoria 3363
info@tailoredstrands.com.au • www.tailoredstrands.com.au

Contents

Issue Vol 7 No 3



Feature

8 **Fashion** – Trends

Patterns

- 12 **Virginia's Tunic** – Knitalpaca
- 13 **Laced Jacket** – Naturally Yarns
- 14 **Asymmetric Poncho** – Jo Sharp
- 15 **V-Neck Top** – Naturally Yarns
- 16 **Mock Plait Scarf** – Patons
- 18 **Girl's Dress** – Naturally Yarns
- 22 **Lampwork Hat and Mitts Set** –
Knit Picks
- 25 **Little Dress** – Naturally Yarns
- 28 **Cerise Cowl** – Banksia Yarns
- 29 **Cropped Jacket** – Patons
- 30 **Waistcoat** – Naturally Yarns
- 31 **Crochet Shawl** – Naturally Yarns
- 32 **Man's Sweater** – Patons
- 34 **Garter Stitch Vest & Hat** –
Naturally Yarns
- 37 **Cosy Mornings** –
Knitting Yarns by Mail



- 38 **Sleeveless Hoodie –**
Naturally Yarns
- 42 **Garter Stitch Snug –**
Naturally Yarns
- 43 **Little Shrug –**
Naturally Yarns
- 44 **Red Brick Cowl –**
Banksia Yarns
- 45 **String Top Envy –** Jo Sharp
- 46 **Yoke Top –** Naturally Yarns
- 48 **Instructions for patterns**

Regulars

- 3 From the Editor
- 6 News
- 76 Glossary
- 81 Business Directory
- 82 Next Issue



CLICK
HERE
NEXT

Knitting news from around the world, this edition features new yarns, books and lots of places to check out ideas and materials for the avid knitter. Kicking off with a look at some books – both old and new that are definitely a ‘must buy’.

By Susan Cordes

Yarns – And So To Knit



The Rare Yarns Company

A yarn company to look out for is Yarnhaus. According to a spokesperson from the company ... 'Some of us like to knit everyday, and others squeeze in some stitches when they can. Joining in the forum discussions on Ravelry is great fun for some knitters, but others like to sit back and read.

What we all have in common though, is that we love yarn. We love that skein of beautiful fibre that represents potential. Potential and creativity. That process of creating something even more beautiful than the skein itself.'

With this ethos it is not surprising that they stock beautiful yarns, patterns and accessories. This Australian company is very interactive

with its clients and are obviously 'knitters' themselves and they love to hear 'knitting stories'. Check them out at: www.suzyhausfrau.com.au

New Zealand always in the forefront with Australia with wools and textiles, has some wonderful yarns on offer. The Rare Yarns Company has some delightful yarns made in New Zealand. This company has a number of retail outlets in Australia and New Zealand. My favourite range they showcase is the Endare 4ply range and with the resurgence of vintage 1940s and 1950s patterns this is a wonderful yarn to work with. The colours are stunning. This company also has an 8ply range to tempt you! www.rareyarns.co.nz

Books

'Button and Stitch' by Kristen Rask – although not a knitting book per se takes a look at how to use up some of those buttons that were left over from knitting projects. The author shows you how to incorporate buttons into gifts, clothes and jewellery. Step by step instructions and some great photography make this book a must. Published by North Light Books in 2009

'101 Easy to Make Craft Projects' published by David and Charles in 2013 (D&C). This is a treasure of a



book with quick and simple projects to knit, sew, bead, bake and create.

'Easy World Craft Crochet' published by DK in 2014. This book contains a collection of beautiful, handmade



garments and accessories for the home and wardrobe to crochet. There is a step by step guide with great photos. Projects cover all abilities.





©Arian Zwegers Wikimedia

Fairs, Fetes, Shows and Classes – Australia and New Zealand

3rd – 6th September: Craft and Quilt Fair, Air Force Museum of New Zealand, Wigram, Christchurch, New Zealand

3rd – 6th September: Craft and Quilt Show, Claudelands Event Centre, Hamilton, New Zealand

21st – 24th September: A 2-day plus 2 other 1-day workshops at the Misty

Mountain Getaway in Dorrigo, NSW – Bookings now being taken through the website at <http://www.mistymountaingetaway.com>

7th – 11th October: Brisbane Craft & Quilt Fair, Brisbane Convention & Exhibition Centre, Southbank, Qld <http://www.craftfair.com.au/wp/> Brisbane

Fairs, Fetes, Shows and Classes - overseas

28th – 31st August: Chilterns Craft and Design Show, Stonor park, Henley-on-Thames UK. This summer, one of the most prestigious craft shows in the UK, returns to the beautiful grounds of Stonor Park. There will be unique jewellery, gifts, home and garden pieces, created by over 200 UK craftspeople available to purchase, along with the continually popular entertainment such as workshops, demonstrations and live music throughout the day. So, with all this and then being surrounded by the striking landscape of Stonor Park, we can assure you it is going to be a truly special day

3rd - 5th September: Creative Craft Show, Esher Surrey, UK. Stock up on craft and hobby supplies, take part in workshops or free make and take sessions whilst visiting the Creative Craft Show. - See more at: <http://www.thesewingdirectory.co.uk/whats-on/#August>

10th – 12th September: The Stitching Sewing and Hobbycraft Show. Event city, Manchester UK – It will be a day full of demonstrations,

creative workshops and enough creative crafting supplies to keep you busy for months! Don't miss this crafty event of the year! Plus, Women's Weekly Live! Will be running alongside the show, with a series of must see workshops, live theatres, catwalk displays and much, much more!

11th – 13th September: Weald of Kent Craft and Design Show, Penshurst Place Tonbridge UK.

11th – 13th September: Bristol Wool Fair For more details go to: <http://www.bristolwoolfair.co.uk/>

26th – 27th September: Yarndale, Skipton Auction Mart, North Yorkshire UK

More details: <http://yarndale.co.uk/>

26th September – 4th October: Shetland Wool Week – an extensive range of exhibitions, classes and events, which will cover weaving, spinning, dyeing, Fair Isle and lace knitting. Events will take place from the most southern tip of the Shetland Islands, right up to the most northerly island of Unst, famous for its beautiful lacework, with many locations in between.

Websites to Check Out



<http://www.woolmark.com/australian-merino-wool>
<http://www.thewoolshack.com/>
www.newforestmohair.co.uk
www.sewmesomething.co.uk
<http://www.kcguild.org.uk>

More Yarns

- 'Mermaid' is a new yarn on offer by Marriner yarns. It is 100% acrylic and is available in double knit ply which is popular for all standard double knit designs. Check out the website for more information. <http://www.marrineryarns.com>
- 'Cocoon' by Bergere De France according to the company's catalogue - 'is a light, airy and fluffy ribbon yarn.' This very pretty and versatile yarn is available in a range of colours that will appeal to many knitters. It is 70% acrylic and 25% mohair with 5% alpaca. It can be knitted up using 6.5mm knitting needles, so will grow quickly.
- 'Norvège' another yarn by Bergere De France is a slightly twisted, soft feel and gossamer type of yarn. It is 40% combed wool, 40% acrylic and 20% mohair. Use 4mm knitting needles for this yarn.



Image supplied by Black Sheep Wool

Australian Knitting

CLICK
HERE
NEXT

Feature

Knitting Trends

by Susan Cordes

Knitting trends and new yarns are hooking in to the new season with some very pretty and 'must have' colours, textures and plys. Most of us tend to knit in double knit (8ply), chunky or Aran, yet the thinner 3 and 4plys are a joy to use, albeit you need a bit more patience as your piece will not grow as quick!

With vintage 1940's and 1950's garments very popular and trending again this season - this look is best achieved knitting in the original 4ply. Take a look at: <http://www.fab40s.co.uk/> and <http://www.chronicallyvintage.com/2014/09/knitting-trends-of-1940s.html>

for inspiration and to get a 'flavour' of the era.

Knitwear trends are on the 'cusp' this edition as the weather starts to change so does the type of knitwear, the colour and of course the weight of sweaters and cardigans. Out go the heavy, cosy winter weights

and in come the lighter spring and summer garments.

Colour – the end of the winter blues!

Autumn and winter this year has been brightened up with bold coloured jumpers and cardigans – always



Cotton Rich Aran

www.blacksheep yarns.com

CLICK
HERE
PREV.

Australian Knitting

Circular Knitting



Photography© by John Polak, from Circular Knitting Workshop
© by Margaret Radcliffe, used with permission from Storey Publishing.

a way the cheer up winter days. Feature colours are emerald green, sapphire blue, amethyst purple – with even a bright orange on the fashion board. These colours blend into the new season and lead us to a wider colour palette. The colour palette also includes forest green, maroon, jewel tones, lavender, and earthy brown.

Colour – Stepping into spring and summer

The 'blues and purples' of the previous season are included and melted into the spring colour palette along with a myriad of other featured colours such as:

- White
- Stone
- Ice blue
- Beige
- Salmon and burgundy
- Cool green
- Mint green
- Coral red
- Yellow
- Navy

Neon colours are still around with green and pink the most dominant. Carbon, although a more aggressive colour usually appearing in winter wear has been 'let out of the bottle' and influences its magic on many designs. Other colours to choose from include digital blue and steel or industrial influenced shades and hues. Tones to use are reminiscent of naturally dyed

Circular Knitting



Photography© by John Polak, from Circular Knitting Workshop
© by Margaret Radcliffe, used with permission from Storey Publishing.



Photography© by John Polak, from Circular Knitting Workshop
© by Margaret Radcliffe, used with permission from Storey Publishing.



Beachcomber Yarn

items – colours such as the earthy shades of terracotta, beeswax, shell and fern.

Knitwear shapes and designs

Cosy and chunky is the usual staple winter wardrobe; however it need not be frumpy. Less is definitely more especially if you take a leaf out of fashion designer Stella McCartney who often pairs oversized jumpers with wide-leg trousers for chic or ribbed sweater dresses paired with leggings – all with the spring colour of white included.

The spring always heralds the beginning of the seasons new knitwear shapes and designs with 2015 showcasing 4 main styles:

- **The Highland Look** – this is a classic look utilising cables and ribs in camel, cream and navy blue. Plaid, Fair Isle and Argyle also appear in this category which are designs that go perfectly with black trousers
- **Steal Your Partners Jumpers** – Ok What I meant was, go and check out the menswear department of your local store to get hold of oversized jumpers and long line cardigans as these go so well with leggings
- **Vintage Forties** – Go for twinset, or a long line cardigan teamed with a thin belt, calf length pencil skirt or trousers. Or simply knit up a short sleeved forties inspired cardigan in 4ply
- **Layering Lives On** – Layering is still the go with many designers opting to combine chic knit creations with many other different types and weights of textiles to create a sophisticated or city look.

Other shapes to aim for include – draped pockets, sweater tie knots, elongated sleeves, the blanket coat, panelled rib knit tops, capes and mohair sweaters.

Yarns to Work With

There are some great new innovations in this industry with the introduction of a fine yarn that included steel in its

composition that gives a structured, yet sheer quality somewhat akin to sheer gauze.

Unusual yarns this season include the irregular 'slubby' yarns which give an interesting dimension to the knitted garment, waterproofed yarns, brushed wools and tissue knits. Sirdar has introduced a 'cotton rich Aran' and although most of us regard any form of Aran yarn for winter wear this Aran is a lightweight summer alternative. It is still the same thickness as Aran, yet is made from a cotton and acrylic mix. Sirdar has 8 shades of this yarn launched and has patterns available for this yarn. Sirdar has also introduced a new yarn called 'Beachcomber' which is a double knit, summer yarn made from 100% cotton and knits up into a slub texture. There are 12 shades available that include mixed and tonal shades and plain.

The Australian textile industry has also launched a new yarn – it is a superfine wool, originally used for high-end suiting which has now been developed as a superfine knitting yarn. Wangaratta Woollen Mills is the leader for this product. Check out Cleckheaton who showcases this fabulous superfine Merino wool at: <http://www.cleckheatonsuperfine.com.au/yarn/>

Quotes

- A good friend always says "Every fault a fashion". By this she means, do not regard your 'mistakes' as errors, instead turn them into creative learning experiences. (Erika Knight)
- I call my mistakes 'Design Modifications'! (Susan Cordes)
- "Knitting is the saving of a life" – Virginia Wolf (Writer and Knitter 1882 – 1941)



Photography© by John Polak, from Circular Knitting Workshop
© by Margaret Radcliffe, used with permission from Storey Publishing.

Another company well worth a mention is 'The Rare Yarns Company'. This is a New Zealand supplier of Merino knitting wool. According to their website:

(<http://www.rareyarns.co.nz/>)

"The yarns you see here are made from the finest natural fibres and colours sourced from alpacas, llamas, sheep, camel and goats. Whilst much of the wool we use comes from New Zealand, we also source beautiful natural wools from Tibet, Peru and other countries"

Yarns available include

- Rare Essentials: Boucle, Brushed and 8ply
- Rare Earth: Boucle, Brushed and 8 ply in a wide range of natural undyed alpaca colours
- Rare Endare: 4 ply yarn, 70% alpaca/20% merino, in a range of daring colours
- Rare Fire: 14 ply yarns, one in a mix of warm tones and one featuring cool tones

Rare Yarns also stocks knit kits with each kit containing the pattern, yarn and the buttons or accessories, where appropriate, meaning you've got everything you need to complete a gorgeous looking garment or accessory.

Designers and design/fashion houses

Designers and design/fashion houses, this season have their own iconic looks and some of these will surely filter down into the high street shops.

- Céline - promotes the knitted dress that includes fringing with a suggestion to mix knits with silks and cotton or leather separates
- Miu Miu - showcases quirky granny chic using plaids, frills and heavy wool coats and panelled ribbed tops
- Bottega Veneta - inspired by dance, this collection using chunky cardigans and simple jersey separates and belted cardigans
- Joseph - offers grungy loopy knits, Aran jumpers and coopknit socks
- Circular knitting has been around for many centuries and has found resurgence over the past few years. Take a look at Circular Knitting Workshop by Margaret Radcliffe for some wonderful patterns, inspiration and of course step by step instructions.

Finally, with all these designs, materials, patterns and gorgeous colours to work with this season, what are you waiting for - go knit! ■

Fact File

- Circular knitting or knitting in the round is a form of knitting that creates a seamless tube. When knitting circularly, the knitting is cast on and the circle of stitches is joined. Knitting is worked in rounds (the equivalent of rows in flat knitting) in a spiral. Originally, circular knitting was done using a set of four or five double-pointed needles. Later, circular needles were invented, which can also be used to knit in the round: the circular needle looks like two short knitting needles connected by a cable between them (Ref: Wikipedia)
- Céline is a French ready-to-wear and leather goods luxury brand that has been owned by LVMH group since 1996. It was founded in 1945 by Céline Vipiana. Since November 2015, the headquarters are located at: 16 rue Vivienne in Paris, at the Colbert de Torcy's private mansion. (Ref: Wikipedia)
- Miu Miu - is a high fashion women's clothing and accessory brand from the Prada fashion house. Miu Miu opened in 1993 and is headed by Miuccia Prada. The name Miu Miu is derived from Miuccia Prada's family nickname. Miu Miu is set to launch its first fragrance in 2015. This is the first time that Miu Miu has expanded outside the fashion and accessories markets (Ref: Wikipedia)
- Bottega Veneta - is an Italian luxury goods house best known for its leather goods. Founded in 1966, it was purchased in 2001 by Gucci Group, now a part of the French multinational group Kering. Bottega Veneta is headquartered in Vicenza, in the Veneto region of north eastern Italy. The Bottega Veneta slogan is "When your own initials are enough" (Ref: Wikipedia)
- Joseph is a fashion brand and retail chain that was established in London by Moroccan entrepreneur Joseph Ettedgui and his family in 1972 (Ref: Wikipedia)



Virginia's Tunic — see page 46 for pattern instructions



CLICK
HERE
PREV.



Lace Jacket see page 49 for pattern instructions



CLICK
HERE
NEXT



CLICK
HERE
PREV.

Asymmetrical Poncho—see page 52 for pattern instructions



V-Neck Top — see page 53 for pattern instructions



CLICK
HERE
NEXT



CLICK
HERE
PREV.

Mock Plait Scarf see page 55 for pattern instructions

Aussie Wool RULES!



*Get behind the
team you love*



WOOLMARK

**Knit your own beanie or
scarf in 100% Aussie wool.**

As well as supporting your team, you'll be backing Australian wool growers and local jobs. The kit includes all items to knit an Official AFL beanie or scarf in your AFL team colours.

Available at AFL club merchandise stores,
The AFL Store, selected local yarn stores and shop.afl.com.au
or phone **1800 337 032** for your nearest store.

**CLICK
HERE
NEXT**

Projects

Girl's Dress Design by Peter Pan

YARN

One-Colour Dress

2, 3, 3, 4, 4 balls 50gm Peter Pan DK
913 Blue Jeans

Two-Colour Dress

2, 2, 2, 3, 3 balls 50gm Peter Pan DK
colour A 943 Jade

1, 1, 1, 1, 2 balls 50gm Peter Pan DK
colour B 905 Puddle

3 buttons

(optional 3 buttons for front decoration)

NEEDLES AND TOOLS

3.25mm knitting needles

4.00mm knitting needles

MEASUREMENTS

To fit chest: 46, 51, 56, 61, 66cm

Finished fit: 51, 56, 61, 66, 71cm

Garment length: 39.5, 43, 48, 53.5,
61cm

Sleeve length: 2.5, 3, 4, 4.5, 5cm

TENSION

24 sts by 32 rows over stocking st on
4mm needles to 10cm.

WORKING PATTERN

TWO COLOUR DRESS

BACK

Using 4.00mm needles and colour A,
cast on 80 (90, 98, 106, 118) sts.

Row 1: * K1, P1, rept from * to end.

Row 2: * P1, K1, rept from * to end.

These two rows form moss stitch.

Rept these 2 rows 3 more times, dec
1 st at end of last row 79 (89, 97,
105, 117) sts.

Next Row: Knit.

Next Row: Purl.

These 2 rows form st st.

Cont in st st dec at each end of
5th and every foll 6th row until
55 (61, 67, 71, 77) sts rem.

Beg with a P row, work 5 more
rows in st st.

Change to 3.25mm needles and
colour B.

Next Row: K1 *P1, K1, rept
from * to end.

This row forms moss st, work 9
rows more in moss st.

Shape Armholes

Keeping moss st correct
throughout, cast off 4 (4, 5,
5, 5) sts at beg of next 2
rows. 47 (53, 57, 61, 67)
sts.

Work 4 (5, 6, 6, 7) rows
dec at each end of every
row. 39 (43, 45, 49, 53)
sts. **

Work 2 (3, 4, 6, 7) rows
without shaping.

Divide for back opening

Next Row: Patt 18 (20, 21, 23, 25),
cast off next 3 sts, patt to end.

Cont on these 18 (20, 21, 23, 25)
sts only until armholes measure 8.5
(9.5, 11, 12.5, 14)cm, ending on
wrong side.

Shape left back neck and shoulder

Next Row: Cast off 11 (13, 14, 16,
17) sts, patt to end.

Next Row: Cast off 3 sts, patt to last 2
sts, patt 2tog.

Next Row: Work in moss st.

Next Row: Cast off rem 3 (3, 3, 3,
4) sts.

With WS facing rejoin yarn to rem 18
(20, 21, 23, 25) sts, cont in moss st
until armhole measures same as left
side, ending on a right side row.

Shape right back neck and shoulder

Next Row: Cast off 11 (13, 14, 16,
17) sts, patt to end.

Next Row: Cast off 3 sts, patt to last
2 sts, patt 2tog.

Next Row: Patt to end.

Next Row: Cast off rem 3 (3, 3, 3,
4) sts.

FRONT

Work as given for back until ** have
been reached.

Cont without shaping until armhole
measures 5 (5.5, 7, 7.5, 9)cm, ending
on WS.

Shape neck

Next Row: Patt 11 (12, 12, 13, 14),
cast off next 17 (19, 21, 23, 25) sts,
patt to end.

Working on these 11 (12, 12, 13,
14) sts, keeping moss st correct, dec
at neck edge on next 5 (6, 6, 7, 7)
rows. 6 (6, 6, 6, 7) sts. ▶



CLICK
HERE
PREV.

Australian Knitting





◀ *Girl's Dress continued.*

Cont without shaping until armhole measures same as right back to shoulder, ending on a RS row.

Shape shoulder

Next Row: Cast off 3 sts, patt to end.

Next Row: Patt to end.

Cast off rem 3 (3, 3, 3, 4) sts.

With wrong side facing, rejoin yarn to rem 11 (12, 12, 13, 14) sts.

Dec at neck edge on next 5 (6, 6, 7, 7) rows. 6 (6, 6, 6, 7) sts.

Cont without shaping until armhole measures same as left back to shoulder, ending on a WS row.

Shape shoulder

Next Row: Cast off 3 sts, patt to end.

Next Row: Patt to end.

Cast off rem 3 (3, 3, 3, 4) sts.

SLEEVES (BOTH ALIKE)

Using 3.25mm needles and colour B, cast on 44 (48, 52, 58, 62) sts. Work 4 rows in moss st, as given for back, dec at end of last row. 43 (47, 51, 57, 61) sts.

Work in moss st until sleeve measures 2.5 (3, 4, 4.5, 5)cm, ending on WS.



Shape Top

Cast off 4 (4, 5, 5, 5) sts at beg of next 2 rows. 35 (39, 41, 47, 51) sts. Work 4 (4, 4, 4, 6) rows dec at each end of every row. 27 (31, 33, 39, 39) sts.

Work 8 (8, 12, 12, 12) rows dec at each end of next and every foll 4th row. 23 (27, 27, 33, 33) sts.

Work 4 (6, 6, 10, 10) rows dec at each end of next and every foll alt row. 19 (21, 21, 23, 23) sts.

Cast off 2 sts at beg of next 4 rows.

Next Row: *Patt 2tog, patt 1, rept from * to last 2 (4, 4, 3, 3) sts, patt 2tog, patt 0 (2, 2, 1, 1). 7 (9, 9, 10, 10) sts.

Next Row: Moss st.

Cast off.

Join shoulder seams by top sewing.

NECKBAND

Using 3.25mm needles and colour B, and with RS facing, starting at left back of neck edge, pick up and K12

(14, 15, 17, 18) sts, K9 (10, 10, 11, 11) sts down left front edge, 5 (6, 6, 7, 7) sts around curve, 17 (19, 21, 23, 25) sts at centre front, 5 (6, 6, 7, 7) sts around right curve, 9 (10, 10, 11, 11) sts up right front edge, and 12 (14, 15, 17, 18) sts at right back of neck. 69 (79, 83, 93, 97) sts.

Row 1: Sl 1, P1, *K1, P1, rept from * to last st, K1.

Row 2: As 1st row.

Rept 1st and 2nd rows once, then 1st row once more.

Cast off loosely.

BUTTONHOLE BAND

Using 3.25mm needles and colour B, and with RS facing, starting at top of right back opening, pick up and K18 (20, 22, 22, 24) sts.

Row 1: K1, P1, to end.

Next Row: Buttonhole row - Moss st 3 (3, 3, 3, 4), *cast off next st, patt 4 (5, 6, 6, 6), rept from * to last 5

(5, 5, 5, 6) sts, cast off next st, patt to end.

Next Row: Work as given for 1st row, casting on sts over cast off sts of previous row.

Work 2 more rows in moss st.

Cast off.

BUTTONBAND

Work as given for buttonhole band omitting buttonholes.

MAKING UP

Join side and sleeve seams by top sewing. Sew in sleeves by top sewing. Sew on buttons.

ONE COLOUR DRESS

Work as instructions given for 2-colour dress using one colour throughout.

Wentworth Distributors NZ Ltd

Free phone AU: 1800 150 542

Free phone NZ: 0800 738 998

www.naturallyyarnsnz.com

NEEDLE NOOK

South Australia's widest range in knitting yarns, patterns and accessories.

Beautiful yarns include wool, cotton, mohair, alpaca, bamboo and more



WE'VE MOVED!
4/453 Fullarton Rd
Highgate SA 5063
Ph: 08 8271 4670

Proud stockists of major brands.

Mail order & phone sales welcome.

www.needlenook.com.au



Nundle Woollen Mill

Made on machinery of up to 100 years old, Nundle woollen yarn is perfect for any knitting project.

Available in 4, 8, 12, 20 & 72 plys in up to 40 colours, you are sure to find the perfect yarn.

1 Oakenville St
Nundle NSW 2340

Open 7 Days
10am - 4pm

Shop online at www.nundle.com
or telephone 1300 NUNDLE (1300 686 353)

Lampwork Hat and Mitts

This fun hat and mitt set use the same bright patterning, but are worked at different gauges, in different weights of yarn. By Knit Picks Design Team

YARN

- 1 ball each 50gm Knit Picks Wool of the Andes in MC Aurora Heather 25065, CC1 Marina 25074, CC2 Avocado 23766, OR
- 1 ball each 50gm Knit Picks Wool of the Andes Sport in MC Aurora Heather 25299, CC1 Marina 25290, CC2 Avocado 25282
- Smooth scrap yarn

NEEDLES AND TOOLS

Hat:

- 5.00mm double pointed needle set OR
- 5.00mm circular needles 70-130cm for Magic Loop

Mitts:

- 3.75mm double pointed needle set OR
- 3.75mm circular needles 70-130cm for Magic Loop
- Wool sewing needle
- Stitch markers

MEASUREMENTS

Finished fit Hat: 47cm (45) cm brim circumference

Finished fit Mitts: Ladies' S, M, L (15.8, 19, 21.5) palm circumference

TENSION

Hat: 18 sts by 20 rows in stranded St st in the round after blocking 10cm

Mitts: 28 sts by 30 rows in stranded St st in the round, after blocking 10cm

GETTING STARTED

The hat is a simple beanie. Knit the ribbing short for a single layer, or longer so that it can be doubled.

HAT

With worsted weight MC and smaller needles, loosely cast on 84 (96) sts. PM and join to work in the round, being careful not to twist sts.

Work in K2, P2 rib for 2-4", depending on your preference. Switch to larger needles and knit one round in MC.

Attach worsted weight CC1 and begin working from All-Over Chart, repeating the four stitches 21 (24) times around the hat. (The chart includes two repeats of stitches and rounds to show how the pattern develops.)

Work the nine-round repeat three times.

Next Round: begin working from the Crown chart, following repeats and decreases as given. After last round, 7 (8) sts remain. Break CCs. K2tog around the next round: 4 sts remain. Break MC and pass yarn tail through remaining live sts; pull tight to close hole.

MAKING UP

Pass all yarn tails to the inside. Weave in ends, wash and block.

MITTS

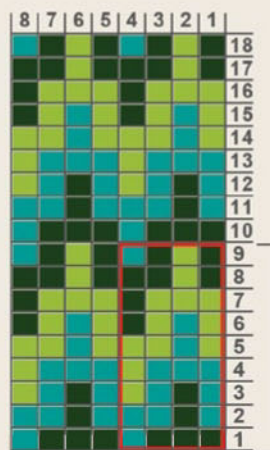
The mitts are worked just like the hat, beginning with a ribbed cuff and working through the color repeat. The two mitts are worked identically except for thumb placement.





Lampwork Charts

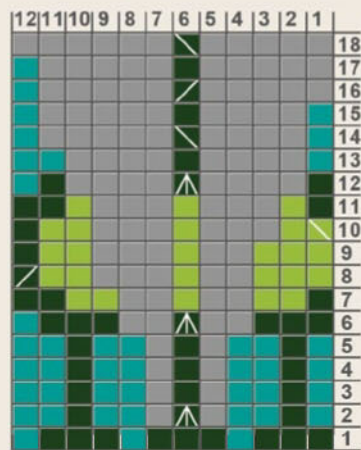
All-Over Chart



Repeat these 4 sts
21 (24) times around.

Repeat these 9
rounds 3 times.

Crown



Repeat these 12 sts 7 (8) times around.

Follow charts from bottom to top, and rounds from right to left.

Legend:



knit
knit stitch



No Stitch
Placeholder - No stitch made.



Central Double Dec

Slip first and second stitches together as if to knit. Knit 1 stitch. Pass two slipped stitches over the knit stitch.



k2tog
Knit two stitches together as one stitch



ssk
Slip one stitch as if to knit, Slip another stitch as if to knit. Insert left-hand needle into front of these 2 stitches and knit them together

MC (Aurora Heather)
CC1 (Marina)
CC2 (Avocado)



Lampwork Hat and Mitts continued.

Note: Because the triple-stranded colourwork tends to make a less-stretchy fabric, the mitts are large through the palm. To choose your size, measure around your hand, including the thumb, at the base of the thumb. If this measurement is closest to 7", work size Small; if closest to 8", work size Medium; if closest to 9", work size Large directions. This affects how many rounds to knit and where to place the Thumb.

WORKING PATTERN

With sport weight MC and smaller needles, loosely cast on 44 (52, 60) sts. PM and join to work in the round, being careful not to twist sts. Work in K2, P2 rib for 5.5-10cm, depending on your preference. Switch to larger needles and knit one round in MC. Attach sport weight CC1 and begin working from Mitt Chart, repeating these 4 sts 11 (13, 15) times around. The colourwork portion of the Mitts begins at the base of the palm;

measure your hand to the base of your fingers. If your palm measures closest to 10cm, work size Small directions; closest to 11.5cm work Medium size directions; closest to 12.5cm, work Large size directions. This affects how many rounds to knit and where to place the Thumb.

THUMB

In the round indicated for your size, an afterthought thumb is set up.

For the Right Mitt: work 2 sts in pattern.

Left Mitt: work in pattern to 10 sts before the end of the round.

For Both Mitts: with scrap yarn, knit across the next 8 sts. Slip these 8 sts back to the LH needle; continue working in pattern with the working yarns across these 8 sts and around the hand. Continue working in the round to the last round for your size. Break CCs and K 1 round in MC. Switch to smaller needles and work 2.5cm in K2, P2 rib. Cast off all sts loosely.

Place the 8 sts below the afterthought thumb onto one smaller-size DPN or one side of a circular needle. On a

second DPN or the other side of a circular needle, Pick up 8 sts from the row above the afterthought thumb. Unravel the scrap yarn, leaving a hole and 16 live sts.

Attach MC, PM and knit around all sts using smaller needles; join to work in the round. Work in K2, P2 rib for 2.5cm; cast off all sts loosely. Using the yarn tails, close up any holes at the sides of the thumb ribbing. Repeat on second Mitt.

MAKING UP

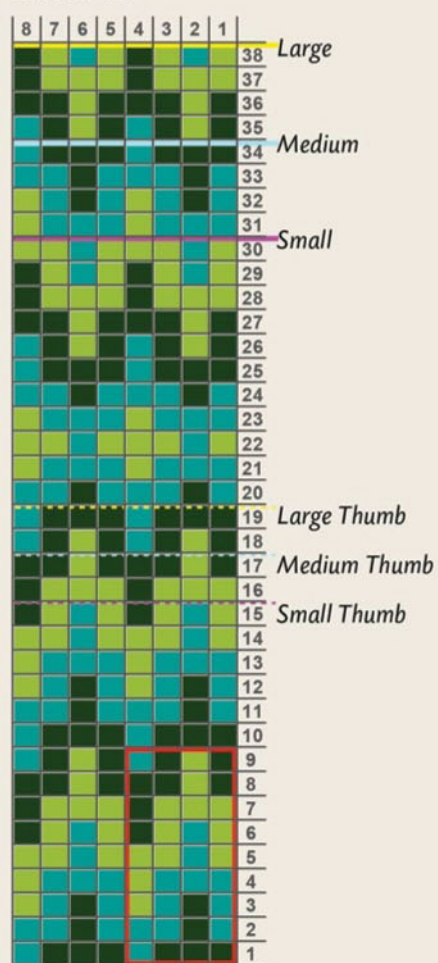
Weave in ends, wash and block.

Knit Picks

KnitPicks.com

Ph: 1800 106 750

Mitt Chart



Repeat these 4 sts
11 (13, 15) times around.

Little Dress

Design by Gitta Schrade for Naturally Yarns

YARN

- 2, 2, 3, 4, 5, 6 balls 50gm Loyal Baby Pattern Prints DK/8ply in shade #2007
- 1 Incomparable Button - L193

NEEDLES AND TOOLS

- 3.75mm knitting needles
- 4.00mm knitting needles
- Optional: 3.75mm short circular needle for neckband
- Stitch holders
- Stitch markers

MEASUREMENTS

Size: Newborn, 3 ths, 6-9mths,
12-18mths, 2-3yrs, 3-4yrs
To fit chest: 36, 41, 46, 51, 56,
61cm
Finished fit: 41, 46, 51, 56, 61,
66cm
Garment length, 25, 28, 32, 37, 42,
48cm
Lower Edge: 56, 61, 66, 73, 81,
86cm

SPECIAL ABBREVIATIONS

skp - slip 1 stitch, knit 1 stitch, pass
the slipped stitch over;

TENSION

22 sts by 30 rows over Stocking
Stitch on 4mm needles to 10cm.

GETTING STARTED

Note: For pattern print consistency,
knit all balls either from the inside
or the outside. The individual look
of an item depends on the size of
the garment. The finished garment
may vary in appearance compared
with the leaflet image. Every
garment is unique.

WORKING PATTERN

BACK

With 4.00mm needles, cast on 61
(67, 73, 81, 89, 95) sts.
K1, p1 rib for 2 rows.
Change to 3.75mm needles. ►



CLICK
HERE
NEXT ►



Little Dress continued.

Garner Stitch (= k every row) for 6 (6, 6, 8, 8, 8) rows.

Change to 4.00mm needles.

K1, p1 rib for 2 (2, 2, 4, 4, 4) rows.

Cont in Stst and dec 1 st each end next row, then every 4th (5th, 6th, 6th, 6th, 7th) row 7 (7, 7, 8, 10, 10) more times. 45 (51, 57, 63, 67, 73) sts.

Cont straight until piece measures 16 (18, 21, 25, 29, 34)cm from beg, end with a WS row.

Shape Sleeves

Inc 1 st each end next 4 rows. 53 (59, 65, 71, 75, 81) sts.

Cast on 5 (6, 7, 8, 9, 10) sts beg next 2 rows. 63 (71, 79, 87, 93, 101) sts.

Next Row: RS - P3, k to last 3 sts, p3.

Next Row: WS - P all sts.

Rep last 2 rows 0 (1, 2, 2, 3, 3) times more. Mark centre 5 (5, 5, 7, 7, 7) sts in last row.

Next Row: RS - P3, k to marked centre sts, cast on 5 (5, 5, 7, 7, 7) sts for placket, turn (leave rem sts on hold). 34 (38, 42, 47, 50, 54) sts.

Next Row: WS - P.

Next Row: RS - P3, k to last 5 (5, 5, 7, 7, 7) sts, p to end.

Next Row: WS - P all sts.

Rep last 2 rows until piece measures 22 (25, 29, 34, 39, 45)cm from beg, end with a RS row.

Shape Neck

Next Row: WS - Cast off 2 (2, 2, 3, 3, 3) sts, p until 4 (5, 5, 6, 6, 7) sts on needle, slip these 4 (5, 5, 6, 6, 7) sts to holder, p to end.

Keeping armhole edge correct, cast off 2 sts at neck edge beg of next 4 WS rows. 20 (23, 27, 30, 33, 36) sts.

Next Row: RS - Cast off loosely.

With RS facing, rejoin yarn to sts on hold, p5 (5, 5, 7, 7, 7), k to end.

Next Row: WS - P all sts.

Next Row: RS - P5 (5, 5, 7, 7, 7), k to last 3 sts, p3.

Rep last 2 rows until piece measures 4 rows less than first half, end with a WS row.

Next Row: RS - P1 (1, 1, 2, 2, 2) k2tog, yo twice, p2 (2, 2, 3, 3, 3) sts, k to end.

Next Row: WS - P to double yo, p into first yo, drop 2nd yo off needle, p to end.

Next Row: RS - P5 (5, 5, 7, 7, 7), k to end.

Next Row: WS - P all sts.

Next Row: RS - Cast off 2 (2, 2, 3, 3, 3) sts, k until 4 (5, 5, 6, 6, 7) sts on needle, slip these 4 (5, 5, 6, 6, 7) sts to holder, k to end.

Keeping armhole edge correct, cast off 2 sts at neck edge beg of next 4 RS rows. 20 (23, 27, 30, 33, 36) sts.

Next Row: WS - Cast off loosely.

FRONT

With 4.00mm needles, cast on 61 (67, 73, 81, 89, 95) sts.

K1, p1 rib for 2 rows.

Change to 3.75mm needles.

Garner Stitch (= k every row) for 6 (6, 6, 8, 8, 8) rows.

Change to 4.00mm needles.

K1, p1 rib for 2 (2, 2, 4, 4, 4) rows.

Cont in Stst and dec 1 st each end next row, then every 4th (5th, 6th, 6th, 6th, 7th) row 7 (7, 7, 8, 10, 10) more times. 45 (51, 57, 63, 67, 73) sts.

Cont straight until piece measures 16 (18, 21, 25, 29, 34)cm from beg, end with a WS row.

Shape Sleeves

Inc 1 st each end next 4 rows. 53 (59, 65, 71, 75, 81) sts.

Cast on 5 (6, 7, 8, 9, 10) sts beg

next 2 rows. 63 (71, 79, 87, 93, 101) sts.

Next Row: RS - P3, k to last 3 sts, p3.

Next Row: WS - P all sts.

Rep last 2 rows until front measures 20 (23, 27, 31, 36, 42)cm from beg, end with a WS row.

Next Row: RS - P3, k23 (27, 31, 34, 37, 41) sts, turn (leave rem sts on hold).

Dec 1 st at neck edge next 6 (7, 7, 7, 7, 8) rows. 20 (23, 27, 30, 33, 36) sts.

Cont straight until front measures same as back to shoulder, end with a WS row.

Cast off loosely.

With RS facing, return to sts on hold, slip next 11 (11, 11, 13, 13, 13) sts to holder for neckband, rejoin yarn to sts on hold, k to last 3 sts, p3.

Dec 1 st at neck edge next 6 (7, 7, 7, 7, 8) rows. 20 (23, 27, 30, 33, 36) sts.

Cont straight until front measures same as back to shoulder, end with a RS row.

Cast off loosely.

MAKING UP

Join shoulders and top of sleeve seams.

NECKBAND

With RS facing and 3.75mm needles, k the 4 (5, 5, 6, 6, 7) sts from left back holder, pick up and k12 sts up back neck edge to shoulder seam, 16 (17, 17, 17, 17, 18) sts down front neck, k the from neck holder 11 (11, 11, 13, 13, 13) sts, pick up and k16 (17, 17, 17, 17, 18) sts up front neck to shoulder seam and 12 sts down back neck to holder, k the 4 (5, 5, 6, 6, 7) sts from holder. 75 (79, 79, 83, 83, 87) sts.

Next Row: WS - K all sts.

K1, p1 rib for 4 rows.

Cast off loosely in rib.

Join sleeve and side seams.

Sew on button opposite buttonhole.

Wentworth Distributors NZ Ltd

Free phone AU: 1800 150 542

Free phone NZ: 0800 738 998

www.naturallyyarnsnz.com

Knit Picks®

HIGH QUALITY
YARN AND NEEDLES?

✓ *Check!*

ASTOUNDINGLY
AFFORDABLE PRICES?

✓ *Check!*

SHIPPING TO
AUSTRALIA?

Yep, we've got that too!



KnitPicks.com 1-800-106750

Pictured:
Preciosa Tonal Worsted
100% Merino Wool - 100g

CLICK
HERE
NEXT →



Cherise Cowl – see page 56 for pattern instructions



CLICK
HERE
PREV.



Cropped Jacket — see page 57 for pattern instructions



CLICK
HERE
NEXT



CLICK
HERE
PREV.

Waistcoat — see page 59 for pattern instructions



Crochet Shawl – see page 60 for pattern instructions



CLICK
HERE
NEXT

Patterns



CLICK
HERE
PREV.

Man's Sweater — see page 65 for pattern instructions

KNIT & CROCHET FOR ME!




Patons has all your baby knitting & crochet covered with our **BIG BOOK of BIG BABY** (Book 1101) featuring Patons Big Baby 4 & 8 ply, and Big Baby Fair Isle 8 ply.



Knitted Dress in
PATONS BIG BABY 4 PLY
RRP \$6.00 per 100g ball

Patons
Big Baby
Australia's
trusted baby
yarns

Phone 1800 337 032 for your nearest stockist.

 /auspinner

 **Patons**
patonsyarns.com.au



CLICK
HERE
NEXT 

Projects

Garner Stitch Vest & Hat

Design by Gitta Schrade for Naturally Yarns



YARN

- 2, 3, 4, 5, 6, 7 balls 50gm Loyal Baby Prints DK 8ply in shade #2006
- 2, 2, 3, 3, 4, 4 Incomparable Buttons – L126

NEEDLES AND TOOLS

- 3.75mm & 4mm straight needles;
- 3 stitch holders, stitch markers,

MEASUREMENTS

Size: Newborn, 3, 6-9, 12-18,
2-3, 3-4yr
To fit chest: 36, 41, 46, 51,
56, 61cm
Finished fit: 41, 46, 51, 56,
61, 66cm
Garment length: 20, 23, 25, 29,
33, 37cm
Hat width around head: 33, 35.5, 39.5,
42, 44, 46cm

SPECIAL ABBREVIATIONS

M1 – make 1 stitch – pick up running thread from front to back, k it through the back loop
skp – slip 1 stitch, knit 1 stitch, pass the slipped stitch over

TENSION

21 sts over Garter Stitch on 4mm needles to 10cm.

GETTING STARTED

Note: For pattern print consistency knit all balls either from the inside or the outside. The individual look of an item depends on the size of the garment. The finished garment may vary in appearance compared with the leaflet image. Every garment is unique.

VEST BACK

With 4.00mm needles, cast on 43 (49, 55, 61, 67, 73) sts.
Garter Stitch (Gtst) until piece measures 11.5 (14, 15.5, 18.5, 21, 23) cm from beg, end with a WS row.

Shape Armholes

****Next Row:** RS – K3, skp, k to last 5 sts, k2tog, k3. 41 (47, 53, 59, 65, 71) sts.

Gtst 3 rows.**

Rep from ** to ** 4 (5, 5, 6, 6, 7) times more. 33 (37, 43, 47, 53, 57) sts.

Gtst straight until piece measures 20 (23, 25, 29, 33, 37)cm from beg, end with a WS row.

Cast off loosely 8 (9, 11, 13, 15, 16) sts beg next 2 rows, leave rem 17 (19, 21, 21, 23, 25) sts on stitch holder for neckband.

LEFT FRONT

With 4.00mm needles, cast on 26 (29, 33, 36, 39, 42) sts.

Girls Version only: Garter Stitch (Gtst) until piece measures 11.5 (14, 15.5, 18.5, 21, 23) cm from beg, end with a WS row.

Boys Version only: Garter Stitch (Gtst) for 5cm, end with a WS row.

Next Row: RS buttonhole row – K to last 7 (7, 7, 8, 8, 8) sts, k2tog, yo twice, skp, k3 (3, 3, 4, 4, 4).

On next row k into first yo and k into back of 2nd yo.

Cont in Gtst and work further buttonholes every 5 (6, 5, 6, 5, 5)cm 1 (1, 2, 2, 3, 3) times more.

Gtst straight until piece measures 11.5 (14, 15.5, 18.5, 21, 23)cm from beg, end with a WS row.

Cont for Both Versions

Shape Armhole

Next Row: RS – K3, skp, k to end – 25 (28, 32, 35, 38, 41) sts.

Gtst 1 row.

Next Row: RS – K to last 5 (5, 6, 6, 7, 7) sts, turn, slip those last rem 5 (5, 6, 6, 7, 7) sts onto a stitch holder for neckband to be worked later. 20 (23, 26, 29, 31, 34) sts.

Gtst 1 row.

****Next Row:** RS – K3, skp, k to last 3 sts, k2tog, k1 (beg of neck shaping). Gtst 1 row.

Next Row: RS – K to last 3 sts, k2tog, k1. 17 (20, 23, 26, 28, 31) sts.

Gtst 1 row.**

Rep from ** to ** 2 (2, 2, 2, 2, 2) times more. 11 (14, 17, 20, 22, 25) sts.

(*)Next Row: RS – K3, skp, k to last 3 sts, k2tog, k1. 9 (12, 15, 18, 20, 23) sts.

Gtst 3 rows. (*)

Rep from (*) to (*) 0 (1, 1, 2, 2, 2) times more. 9 (10, 13, 14, 16, 19) sts.

Next Row: RS – K to last 3 sts, k2tog, k1.

Gtst 3 rows.

Rep last 4 rows 0 (0, 1, 0, 0, 2) times more. 8 (9, 11, 13, 15, 16) sts.

Gtst straight until front meas same as back to shoulder, end with a WS row.

Cast off loosely rem 8 (9, 11, 13, 15, 16) sts.

RIGHT FRONT

With 4.00mm needles, cast on 26 (29, 33, 36, 39, 42) sts.

Boys Version only: Garter Stitch (Gtst) until piece measures 11.5 (14, 15.5, 18.5, 21, 23) cm from beg, end with a WS row.

Girls Version only: Garter Stitch (Gtst) for 5cm, end with a WS row.

Next Row: RS buttonhole row –

K3 (3, 3, 4, 4, 4), k2tog, yo twice, skp, k to end.

On next row k into first yo and k into back of 2nd yo.

Cont in Gtst and work further buttonholes every 5 (6, 5, 6, 5, 5)cm 1 (1, 2, 2, 3, 3) times more.

Gtst straight until piece measures 11.5 (14, 15.5, 18.5, 21, 23)cm from beg, end with a WS row.

Cont for Both Versions

Shape Armhole

Next Row: RS – K to last 5 sts, k2tog, k3. 25 (28, 32, 35, 38, 41) sts.

Gtst 1 row.

Next Row: RS – K5 (5, 6, 6, 7, 7) sts and slip these 5 (5, 6, 6, 7, 7) sts onto a stitch holder for neckband to be worked later, k to end – 20 (23, 26, 29, 31, 34) sts.

Gtst 1 row.

****Next Row:** RS – K1, skp, k to last 5 sts, k2tog, k3 (beg of neck shaping). Gtst 1 row.

Next Row: RS – K to last 5 sts, k2tog, k3. 17 (20, 23, 26, 28, 31) sts.

Gtst 1 row.**

Rep from ** to ** 2 (2, 2, 2, 2, 2) times more. 11 (14, 17, 20, 22, 25) sts. ▶



Gtst until piece measures 11 (12, 13, 14, 15, 16)cm from beg, end with a WS row.

Shape Top

Next Row: RS – K0 (2, 2, 1, 1, 2) sts; *k2tog, k7 (7, 7, 7, 6, 8); rep from * to last 0 (2, 1, 1, 0, 1) sts, k to end. 56 (60, 67, 74, 78, 84) sts. Gtst 3 rows.

Next Row: RS – K0 (2, 2, 1, 1, 2) sts; *k2tog, k6 (6, 6, 6, 5, 7); rep from * to last 0 (2, 1, 1, 0, 1) sts, k to end. 49 (53, 59, 65, 67, 75) sts. Gtst 1 row.

Next Row: RS – K0 (2, 2, 1, 1, 2) sts; *k2tog, k5 (5, 5, 5, 4, 6); rep from * to last 0 (2, 1, 1, 0, 1) sts, k to end. 42 (46, 51, 56, 56, 66) sts. Gtst 1 row.

Next Row: RS – K0 (2, 2, 1, 1, 2) sts; *k2tog, k4 (4, 4, 4, 3, 5); rep from * to last 0 (2, 1, 1, 0, 1) sts, k to end. 35 (39, 43, 47, 45, 57) sts. Gtst 1 row.

Next Row: RS – K0 (2, 2, 1, 1, 2) sts; *k2tog, k3 (3, 3, 3, 2, 4); rep from * to last 0 (2, 1, 1, 0, 1) sts, k to end. 28 (32, 35, 38, 34, 48) sts. Gtst 1 row.

Next Row: RS – K0 (2, 2, 1, 1, 2) sts; *k2tog, k2 (2, 2, 2, 1, 3); rep from * to last 0 (2, 1, 1, 0, 1) sts, k to end. 21 (25, 27, 29, 23, 39) sts. Gtst 1 row.

Largest size only

Next Row: RS – K2 sts; *k2tog, k2; rep from * to last 1 st, k1. 30 sts. Gtst 1 row.

All Sizes

Next Row: K2tog across row, end with k1. 11 (13, 14, 15, 12, 15) sts.

MAKING UP

Break yarn leaving longer end, thread yarn through rem sts, draw up tightly and fasten off. Join back seam.

Wentworth Distributors NZ Ltd
Free phone AU: 1800 150 542
Free phone NZ: 0800 738 998
www.naturallyyarnsnz.com

Garter Stitch Vest & Hat continued.

(*)Next Row: RS – K1, skp, k to last 5 sts, k2tog, k5. 9 (12, 15, 18, 20, 23) sts.

Gtst 3 rows. (*)

Rep from (*) to (*) 0 (1, 1, 2, 2, 2) times more. 9 (10, 13, 14, 16, 19) sts.

Next Row: RS – K1 skp, k to end. Gtst 3 rows.

Rep last 4 rows 0 (0, 1, 0, 0, 2) times more. 8 (9, 11, 13, 15, 16) sts. Gtst straight until front measures same as back to shoulder, end with a RS row.

Cast off loosely rem 8 (9, 11, 13, 15, 16) sts.

MAKING UP

Join back to fronts at shoulders.

NECKBAND

Slip the 5 (5, 6, 6, 7, 7) sts from left front stitch holder onto needle ensure next row will be a RS row.

Gtst for 8 rows.

Next Row: RS – K1, M1, k to end. Gtst 7 rows.

Rep last 8 rows until neckband easily fits along front neck edge to shoulder (do not stretch), end with a WS row.

Cast off loosely.

Slip the 5 (5, 6, 6, 7, 7) sts from right front stitch holder onto needle ensure next row will be a WS row.

Gtst for 7 rows.

Next Row: RS – K to last st, M1, k1. Gtst 7 rows.

Rep last 8 rows until neckband easily fits along front neck edge to shoulder (do not stretch), end with a WS row and ensure to end with same amount of sts as on left front band.

Cast off loosely.

Slip the 17 (19, 21, 21, 23, 25) sts from back neck holder onto needle ensure next row will be a RS row.

Gtst until neckband section is same length as front bands are wide, end with a WS row.

Cast off loosely.

Neatly join front band cast-offs to sides of back neck section.

Join side seams. Sew on buttons.

HAT

With 3.75mm needles, cast on 63 (67, 75, 83, 89, 93) sts.

K1, p1 rib for 8 (8, 8, 10, 10, 12) rows.

Change to 4.00mm needles.

Striped Egg Cosy

Designed by Alison Craven

YARN

- Small amount Heirloom Color Works or Heirloom Merino Magic 8 ply in Main Colour
- Small amounts Heirloom Color Works or Heirloom Merino Magic 8 ply in a selection of Contrast Colours.

NEEDLES AND TOOLS

- 4.00mm knitting needles
- Wool sewing needle

TENSION

Not critical to project.

WORKING PATTERN

In main colour using 4.00mm needles cast on 30 stitches.

Work 6 rows stocking stitch.

Continue in garter stitch throughout (knit every row)

Change to contrast colour and knit 2 rows

Change to main colour and knit a further 2 rows.

Continue in this manner working 2 rows main colour 2 rows in a contrast colour until work measures 8 cm from beginning.

Break off yarn leaving a long tail.

Use wool needle to draw tail of yarn through stitches on needle. Draw up tightly and fasten off securely.

MAKING UP

Sew back seam.

Make a small pom-pom from a selection of colours and attach to top of cosy.

Knitting Yarns by Mail
114 Fox and Fancles Rd
Boolarra Sth, Vic
Ph: 0408 992 927
www.knittingyarns.com.au





YARN

- 7, 8, 9, 11 balls 50gm Loyal Pattern Prints in shade #3006
- 6, 6, 7, 7 Incomparable Buttons – L297

NEEDLES AND TOOLS

- 3.75mm knitting needles
- 4.00mm knitting needles
- Stitch holder
- Markers

MEASUREMENTS

Size: 8, 10, 12, 14years
 To fit chest: 71, 76, 81, 86cm
 Finished fit: 79, 84, 89, 95cm
 Garment length: 42, 46, 50, 58cm

SPECIAL ABBREVIATIONS

M1 – make 1 stitch – pick up running thread from front to back, k it through the back loop
 skp – slip 1 stitch, knit 1 stitch, pass the slipped stitch over
 tbl – through back of loop

TENSION

22 sts by 30 rows over Stst on 4.00mm needles to 10cm

GETTING STARTED

Note: For pattern print consistency knit all balls either from the inside or the outside. The individual look of an item depends on the size of the garment. The finished garment may vary in appearance compared with the leaflet image. Every garment is unique.

WORKING PATTERN

BACK

With 3.75mm needles, cast on 87 (93, 99, 105) sts.

Row 1: RS – *K1, p1, k1; rep from * to end.



Sleeveless Hoodie

Design by Gitta Schrade for Naturally Yarns

Row 2: *P1, k1, p1; rep from * to end.
Rep these 2 rows 5 (5, 6, 6) times more.

Change to 4.00mm needles.
Stocking st straight until piece measures 27 (29, 31, 37)cm from beg, end with a WS row.

Shape Armholes

Cast off 6 (6, 7, 7) sts beg of next 2 rows.
Dec 1 st each end next 4 rows.
Dec 1 st each end every RS row 6 (7, 7, 8) times. 55 (59, 63, 67) sts.
Stocking st straight until piece measures 42 (46, 50, 58)cm from beg, end with a WS row.
Cast off 12 (13, 14, 16) sts beg of next 2 rows for shoulders, leave rem 31 (33, 35, 35) sts on hold for back neck.

LEFT FRONT

**With 3.75mm needles, cast on 42 (45, 48, 51) sts.

Row 1: RS – *K1, p1, k1; rep from * to end.

Row 2: *P1, k1, p1; rep from * to end.
Rep these 2 rows 5 (5, 6, 6) times more.

Change to 4.00mm needles.
Stocking st straight until piece measures 27 (29, 31, 37)cm from beg, end with a WS row.**

Shape Armhole

Cast off 6 (6, 7, 7) sts beg of next RS row.
P 1 row on WS.
Dec 1 st at armhole edge next 4 rows.
Dec 1 st at beg of next 6 (7, 7, 8) RS rows. 26 (28, 30, 32) sts.
Stocking st straight until piece measures 38 (41, 45, 53)cm from beg, end with a RS row.

Shape Neck

Cast off 6 (7, 8, 8) sts beg next WS row.
Dec 1 st at neck edge next 8 rows.
Stocking st straight until front measures same as back to shoulder, end with a WS row.
Cast off rem 12 (13, 14, 16) sts for shoulder.

RIGHT FRONT

Work as for Left Front from ** to ** but end with a RS row instead.

Shape Armhole

Cast off 6 (6, 7, 7) sts beg of next WS row.
Dec 1 st at armhole edge next 4 rows.
Dec 1 st at beg of next 6 (7, 7, 8) WS rows. 26 (28, 30, 32) sts.
Stocking st straight until piece measures 38 (41, 45, 53)cm from beg, end with a WS row.

Shape Neck

Cast off 6 (7, 8, 8) sts beg next RS row.
Dec 1 st at neck edge next 8 rows.
Stocking st straight until front measures same as back to shoulder, end with a RS row.
Cast off rem 12 (13, 14, 16) sts for shoulder.

MAKING UP

Join shoulder seams.

BUTTONBAND

With RS facing of left front for girls garment or right front for boys garment, using 3.75mm needles, pick up and k 92 (98, 110, 122) sts along straight front edge.

Row 1: WS – K1; *p1, k1, p1; rep from * to last st, k1.

Row 2: RS – P1; *k1, p1, k1; rep from * to last st, p1.

Rib further 7 rows.
Cast off loosely in rib.

BUTTONHOLE BAND

With RS facing of right front for girls garment or left front for boys garment, using 3.75mm needles, pick up and k 92 (98, 110, 122) sts along straight front edge.

Row 1: WS – K1; *p1, k1, p1; rep from * to last st, k1.

Row 2: RS – P1; *k1, p1, k1; rep from * to last st, p1.

Rib one more row.

Next Row: RS – Rib 4 (4, 5, 5) sts, k2tog, yo twice, skp; (rib 12 (13, 12, 14) sts, k2tog, yo twice, skp) 5 (5, 6, 6) times; rib 4 (5, 5, 5) sts.

Next Row: RS – Rib across, rib one yo and rib the 2nd yo tbl.

Rib further 4 rows.
Cast off loosely in rib.

HOOD

With 4.00mm needles and RS facing, omitting half of right front buttonhole/buttonband, pick up and k20 (21, 23, 23) sts up neck edge to shoulder, k the back neck holder 31 (33, 35, 35) sts, pick up and k20 (21, 23, 23) sts down front neck, omitting half of buttonhole/buttonband. 71 (75, 81, 81) sts.

Mark centre back st.

Next Row: WS – (P1, k1, p1) twice, p1, k1; p to marked centre st, p into front and back of centre st, p to last 8 sts; k1, p1, (p1, k1, p1) twice. 72 (76, 82, 82) sts.

Mark centre back.

****Next Row:** RS – (K1, p1, k1) twice, k1, p1; k to 2 stitches before marker, M1, k4, M1, k to last 8 sts, p1, k1, (k1, p1, k1) twice. 74 (78, 84, 84) sts. ▶

◀ Sleeveless Hoodie continued.

Next Row: WS – (P1, k1, p1) twice, p1, k1; p to last 8 sts; k1, p1, (p1, k1, p1) twice.

Keeping 8 sts at each front edge correct, work 2 more rows straight.** Repeat from ** to ** 3 (4, 5, 5) times more. 80 (86, 94, 94) sts.

()Next Row:** RS – Patt 8; k to 2 stitches before marker, M1, k4, M1, k to last 8 sts, patt 8.

Next Row: WS – Patt 8; p to last 8 sts; patt 8.

Keeping 8 sts at each front edge correct, work 4 more rows straight.** Repeat from (**) to (**) until 94 (100, 108, 112) sts on needle.

Keeping front edges correct, cont straight until hood measures 28 (30, 32, 33)cm from beg, end with a WS row.

Shape Top

Next Row: RS – Patt 8, k to centre marker, cast off 11 (12, 13, 13) sts, k to last 8 sts, patt 8; cont on this side only; leave sts for other side on hold.

Next Row: Patt 8, p to last 2 sts, p2tog.

Next Row: Cast off 11 (11, 12, 13) sts, work to end.

Rep last 2 rows once more. 12 (14, 15, 15) sts.

Next Row: Patt 8, p to last 2 sts, p2tog. Cast off loosely rem 11 (13, 14, 14) sts.

Break yarn.

Next Row: With WS facing, rejoin yarn to hood sts on hold, cast off 11 (12, 13, 13) sts.

Next Row: RS – Patt 8, k to last 2 sts, k2tog.

Next Row: WS – Cast off 11 (11, 12, 12) sts, work to end.

Rep last 2 rows once more.

Next Row: Patt 8, k to last 2 sts, k2tog.

Cast off loosely rem 11 (13, 14, 14) sts.

Join hood seam.

MAKING UP

Armhole Band

With RS facing and 4.00mm needles, beg at underarm edge, pick up and k40 (43, 47, 51) sts to shoulder seam, and 40 (43, 47, 51) sts down armhole edge to side seam. 80 (86, 94, 102) sts.

K1, p1 rib for 3 rows.

Change to 3.75mm needles.

Rib 2 more rows.

Cast off loosely in rib.

POCKETS (MAKE 2)

With 4.00mm needles, cast on 30 (30, 33, 33) sts.

Row 1: RS – *K1, p1, k1; rep from * to end.

Row 2: *P1, k1, p1; rep from * to end. Rep these 2 rows until piece measures 7 (7, 9, 9)cm from beg, end with a WS row.

Next Row: RS – K1, p1, k2, skp; patt to last 6 sts, k2tog, k2, p1, k1. 28 (28, 31, 31) sts.

Next Row: Patt 1 row (= work sts as they appear).

Next Row: RS – K1, p1, k2, skp; patt to last 6 sts, k2tog, k2, p1, k1. 26 (26, 29, 29) sts.

Next Row: P1, k1, p2; k2tog, patt to last 6 sts, k2tog, p2, k1, p1. 24 (24, 27, 27) sts.

Next Row: RS – K1, p1, k2, skp; patt to last 6 sts, k2tog, k2, p1, k1. 22 (22, 25, 25) sts.

Next Row: P1, k1, p2; p2tog, patt to last 6 sts, p2tog-tbl, p2, k1, p1. 20 (20, 23, 23) sts.

Cast off loosely in patt.

Sew pockets to fronts (use photo as placement guide).

Join sides and armhole bands.

Sew on buttons.

Wentworth Distributors NZ Ltd
Free phone AU: 1800 150 542
Free phone NZ: 0800 738 998
www.naturallyyarnsnz.com





JO SHARP

mulberry silk georgette yarn

Spend \$19 or more on digital patterns at josharppatterns.com and get 50% off. To receive this discount, use the discount code **pattern50** at the checkout (available only until June 2015). This garment #308 Shaped Garter Stitch Cardigan digital download. Shop for yarn at the outlets listed below.

Find Jo Sharp pattern collections & knitting yarns at the following outlets: **ACT** Manuka The Wool Shed @ Manuka, 02 6295 0061 www.woolshed.com.au, **NSW** Beecroft Yarn & Gifts 02 8407 9512, Penrith The Wool Inn 02 4732 2201 www.the-wool-inn.com, Guyra Black Sheep Wool 'n' Wares 02 6779 1196 www.blacksheepwool.com.au, **Hornsby** Hornsby Wool & Craft 02 9482 4924, **Thirroul** Knitting for the Soul 0421 580 730 www.knittingforthesoul.com.au, **Mittagong** Victoria House Needle Craft 02 4871 1682 www.victoriahouseneedlecraft.com.au, **Mudgee** Classic Treasures 02 6372 7626 www.classictreasures.com.au, **Punchbowl** Wool and Yarn (online only) 0425 227 885 www.wooland yarn.com.au, **Wollombi** The Woolombi Wool Store 02 4998 3153 www.woolombiwoolstore.com.au, **Merimbula** Pins & Needles 02 6495 3646 pinsnneedles.allthingsquilting.com.au, **Newcastle** Hand to Hand Crafts 02 4929 7255, **QLD** Newstead Tangled Yarns 07 3666 0276 www.tangledyarns.com.au, **Canungra** My Country Escape 07 5543 4042 www.facebook.com/MyCountryEscape, **Dickies Beach** Kochies Yarn 0418 549 217 www.kochiesyarn.com.au, **SA** Glenelg Barb's Sew & Knits 08 8294 7441 www.barbssewandknits.com.au, **Highgate** Needle Nook 08 8271 4670 www.needlenook.com.au, **St Agnes** House Of Yarn 08 8263 9544 www.houseofyarn.com, **TAS** Hobart The Stash Cupboard 03 6234 1219 www.facebook.com/TheStashCupboard, **Deloraine** The Alpaca Shoppe 0457 198 753 www.facebook.com/TheAlpacaShoppe, **VIC** Canterbury Sunspun 03 9830 1609 www.sunspun.com.au, **Healsville** Crumbz 0412 389 192 www.crumbz.com.au, **Lonsdale** Wild Purl 03 5258 5349, **Mansfield** Country Folk Craft, Art & Gifts 03 5775 2044 www.countryfolk.com.au, **Northcote** Woolarium 03 9486 5275 www.woolarium.com, **Sassafras** Dalcheri Uniquely Ethical 03 9755 2510 www.dalcheri.com.au, **WA** Albany Knit Online Store (online only) www.knit.net.au 0898 414640, **Margaret River** The Margaret River Wool Company 0408 925 590 www.margaretriverwoolcompany.com.au

CLICK
HERE
NEXT



CLICK
HERE
PREV.

Garter Stitch Snug—see page 66 for pattern instructions



Little Shrug — see page 68 for pattern instructions



CLICK
HERE
NEXT



CLICK
HERE
PREV.

Red Brick Cowl — see page 70 for pattern instructions



String Top Envy — see page 71 for pattern instructions



CLICK
HERE
NEXT

Patterns



CLICK
HERE
PREV.

Yoke Top — see page 72 for pattern instructions



exquisite yarns

workshops knitting
crochet felting
spinning dyeing
social groups



custom made
accessories and gifts



mon, tue, wed, fri 9.30am - 4pm | thur 9.30am - 6pm
sat, sun 8.30am - 4pm

3161 7476 | 85 Latrobe Terrace, Paddington | www.knitch.com.au

the **ALPACA** **SHOPPE** *Fibre Craft*

OUR PASSION TO FASHION

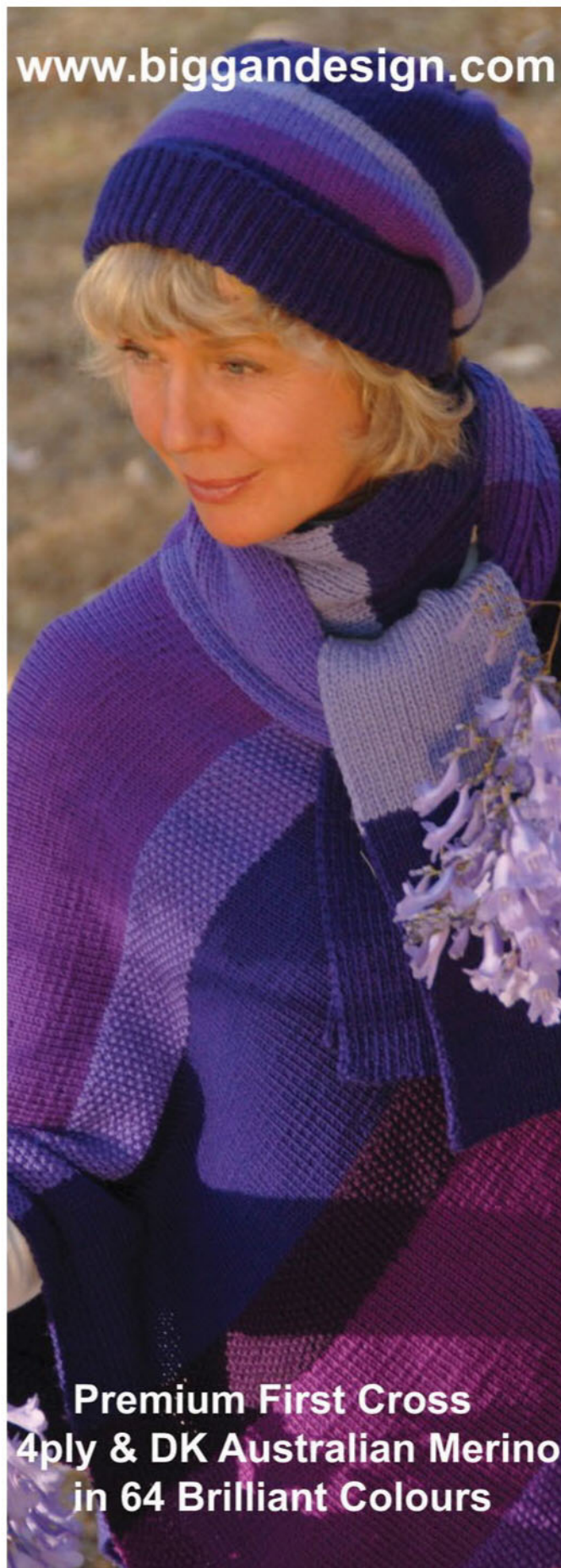
Local Art and Crafts

1 Emu Bay Road
Deloraine Tas 7304
Ph: 0457198753
Email: alpacashoppe@westnet.com.au



visit us on facebook – **alpacashoppe**

www.biggandesign.com



**Premium First Cross
4ply & DK Australian Merino
in 64 Brilliant Colours**

Australian Knitting

CLICK
HERE
NEXT

Virginia's Tunic



A simple tunic worked from the top down to enable accurate fitting.
Designed by Virginia Atkins for Knitalpaca.



YARN

- 6 balls knitalpaca Luxa with a Twist or Luxa 8 ply alpaca.

NEEDLES AND TOOLS

- 6mm knitting needles

MEASUREMENTS

Size: Small, Med, Large

Finished fit: 76cm

Garment length: 80cm

TENSION

13 sts and 18 rows to 10cm, over stocking stitch.

GETTING STARTED

PATTERN BAND A

Row 1: *yo k2 tog* to end.

Row 2: purl

Row 3: knit

Row 4: knit

Rows 5, 6 & 7: knit

Row 8: purl

Row 9: *yo k2 tog* to end.

Row 10: purl

Rows 11, 12, 13 & 14: knit

PATTERN BAND B

Row 1: purl

Row 2: knit

Row 3: purl

Row 4: *yo k2 tog* to end.

Row 5: purl

Rows 6 & 7: knit

Row 8: purl

Row 9: knit

Row 10: purl

WORKING PATTERN

Front and back. Knit 2 the same.
Cast on 50 (60, 70) sts.

Row 1: knit.

Row 2: purl.

Repeat these two rows once.
Then work pattern band A.

WAIST

Continue in stocking stitch until work measured 40 cm or desired length from shoulder to waist, ending on a knit row.

Work pattern band B.

Increase over hips

Knit 6 more rows stocking st.

Next Row: knit, increasing one st every 5th (6th, 7th) stitch. 50 (60, 70) sts.

Continue in stocking st until work measures 75 cm from the beginning, or length desired.

Work pattern band A once. Cast off.

MAKING UP

Darn in ends. Join front and back at shoulder seams, leaving a central gap of 22cm for neck opening. The shoulder seams may be joined 'inside out' to create a decorative ridge, if desired. Join front and back at side seams, using a flat seam, leaving a gap of 25 cm for the armholes.

Knitalpaca

Ph: 03 5235 9208

www.knitalpaca.com.au

Laced Jacket

Design by Gitta Schrade for Naturally Yarns

YARN

- 3, 3, 4, 4, 4, 4 balls 25gm Delight in shade #10
- 4 Incomparable Buttons: L312

NEEDLES AND TOOLS

- 4.5mm & 5mm straight needles
- Stitch holder
- Stitch markers

MEASUREMENTS

To fit bust: 81, 86, 91, 96, 102-107, 107-112cm

Finished fit: 86, 91, 96, 102, 109, 114cm

Garment length: 51, 51, 52, 53, 54, 54cm

Sleeve length: 30, 30, 30, 32, 32, 32cm

SPECIAL ABBREVIATIONS

skp – slip 1 stitch knit 1 stitch pass slipped st over;

TENSION

20 sts over Stst - 10cm on 4.5mm needles.

WORKING PATTERN

BACK

With 5.00mm needles, cast on 170 (182, 194, 206, 218, 230) sts. Change to 4.50mm needles.

Row 1: RS - P all sts.

Row 2: WS - P all sts.

Row 3: RS - K1; *k4, skp, k2tog, k4; rep from * to last st, k1. 142 (152, 162, 172, 182, 192).

Row 4: Purl.

Row 5: RS - K1; *k3, skp, k2tog, k3; rep from * to last st, k1. 114 (122, 130, 138, 146, 154).

Row 6: Purl.

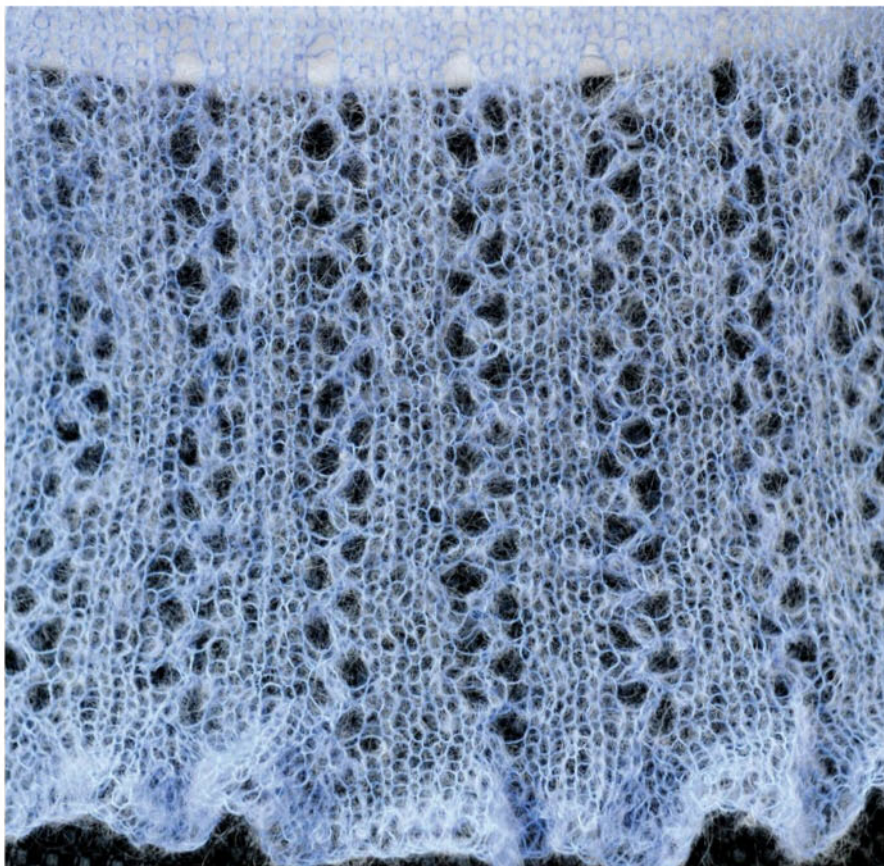
Row 7: K1; *k2, skp, k2tog, k2; rep from * to last st, k1. 86 (92, 98, 104, 110, 116) sts.

Row 8: Purl.

Beg Lace Pattern

Row 1: RS - K1; *k2, yo, k2tog, k2; rep from * to last st, k1.





Row 2: Purl.

Row 3: K1; *k2, skp, yo, k2; rep from * to last st, k1.

Row 4: Purl.

Rep these 4 rows until piece measures 18cm from beg, end with a WS row. Cont in Stocking st from here on; Stocking st until piece measures 33 (33, 33, 34, 34, 34)cm from beg, end with a WS row.

Shape underarms

Cast off 4 (4, 5, 5, 6, 6) sts beg next 2 rows.

Dec 1 st each end next 5 rows.

Dec 1 st each end every other row 4 (5, 5, 5, 5, 5) times. 60 (64, 68, 74, 78, 84) sts.

Cont straight until piece measures 49 (49, 50, 51, 52, 52)cm from beg, end with a WS row.

Shape Neck

Next Row: RS - K21 (23, 25, 27, 29, 31) sts, Turn, on these sts only.

Cast off 4 sts beg next 2 WS rows.

Cast off loosely the rem 13 (15, 17, 19, 21, 23) sts for shoulder.

Return to rem sts, rejoin yarn and cast off next 18 (18, 18, 20, 20, 22)

sts for centre back, work 2nd half to match, reversing shaping.

LEFT FRONT

With 5.00mm needles, cast on 86 (96, 98, 108, 110, 120) sts.

Change to 4.5mm needles.

Row 1: RS - P all sts.

Row 2: WS - P all sts.

Row 3: RS - K1 (0, 1, 0, 1, 0); *k4, skp, k2tog, k4; rep from * to last st, k1 (0, 1, 0, 1, 0). 72 (80, 82, 90, 92, 100).

Row 4: Purl.

Row 5: RS - K1 (0, 1, 0, 1, 0);

*k3, skp, k2tog, k3; rep from * to last st, k1 (0, 1, 0, 1, 0). 58 (64, 66, 72, 74, 80).

Row 6: Purl.

Row 7: K1 (0, 1, 0, 1, 0); *k2, skp, k2tog, k2; rep from * to last st, k1 (0, 1, 0, 1, 0). 44 (48, 50, 54, 56, 60) sts.

Row 8: Purl.

Beg Lace Pattern

Row 1: RS - K1 (0, 1, 0, 1, 0); *k2, yo, k2tog, k2; rep from * to last st, k1 (0, 1, 0, 1, 0).

Row 2: Purl.

Row 3: K1 (0, 1, 0, 1, 0); *k2, skp, yo, k2; rep from * to last st, k1 (0, 1, 0, 1, 0).

Row 4: Purl.

Rep these 4 rows until piece measures 18cm from beg, end with a WS row and dec 0 (1, 0, 1, 0, 1) st at centre of last row. 44 (47, 50, 53, 56, 59) sts.

Cont in Stocking st until piece measures 33 (33, 33, 34, 34, 34)cm from beg, end with a WS row.

Shape underarm

Cast off 4 (4, 5, 5, 6, 6) sts beg next RS row.

Dec 1 st at armhole edge next 5 rows. 35 (38, 40, 43, 45, 48) sts.

Place marker at neck edge.

Dec 1 st at armhole edge and at neck edge every other row 4 (5, 5, 5, 5, 5) times.

Cont straight at armhole edge but cont to dec at neck edge every other row until 13 (15, 17, 19, 21, 23) sts rem for shoulder.

Cont straight until front measures same as back to shoulder, end with a WS row.

Cast off loosely.

RIGHT FRONT

With 5.00mm needles, cast on 86 (96, 98, 108, 110, 120) sts.

Change to 4.50mm needles.

Row 1: RS - P all sts.

Row 2: WS - P all sts.

Row 3: RS - K1 (0, 1, 0, 1, 0); *k4, skp, k2tog, k4; rep from * to last st, k1 (0, 1, 0, 1, 0). 72 (80, 82, 90, 92, 100).

Row 4: Purl.

Row 5: RS - K1 (0, 1, 0, 1, 0); *k3, skp, k2tog, k3; rep from * to last st, k1 (0, 1, 0, 1, 0). 58 (64, 66, 72, 74, 80).

Row 6: Purl.

Row 7: K1 (0, 1, 0, 1, 0); *k2, skp, k2tog, k2; rep from * to last st, k1 (0, 1, 0, 1, 0). 44 (48, 50, 54, 56, 60) sts.

Row 8: Purl.

Beg Lace Pattern

Row 1: RS - K1 (0, 1, 0, 1, 0); *k2, yo, k2tog, k2; rep from * to last st, k1 (0, 1, 0, 1, 0).

Row 2: Purl.

Row 3: K1 (0, 1, 0, 1, 0); *k2, skp, yo, k2; rep from * to last st, k1 (0, 1, 0, 1, 0).

Row 4: Purl.

Rep these 4 rows until piece measures 18cm from beg, end with a WS row and dec 0 (1, 0, 1, 0, 1) st at centre of last row. 44 (47, 50, 53, 56, 59) sts.

Cont in Stocking st until piece measures 33 (33, 33, 34, 34, 34)cm from beg, end with a RS row.

Shape underarm

Cast off 4 (4, 5, 5, 6, 6) sts beg next WS row.

Dec 1 st at armhole edge next 5 rows. 35 (38, 40, 43, 45, 48) sts.

Place marker at neck edge.

Dec 1 st at armhole edge and at neck edge every other row 4 (5, 5, 5, 5, 5) times.

Cont straight at armhole edge but cont to dec at neck edge every other row until 13 (15, 17, 19, 21, 23) sts rem for shoulder.

Cont straight until front measures same as back to shoulder, end with a RS row.

Cast off loosely.

SLEEVES

With 5.00mm needles, cast on 86 (86, 86, 98, 98, 98) sts.

Change to 4.50mm needles.

Row 1: RS - P all sts.

Row 2: WS - P all sts.

Row 3: RS - K1; *k4, skp, k2tog, k4; rep from * to last st, k1. 72 (72, 72, 82, 82, 82).

Row 4: Purl.

Row 5: RS - K1; *k3, skp, k2tog, k3; rep from * to last st, k1. 58 (58, 58, 66, 66, 66).

Row 6: Purl.

Row 7: K1; *k2, skp, k2tog, k2; rep from * to last st, k1. 44 (44, 44, 50, 50, 50) sts.

Row 8: Purl.

Beg Lace Pattern

Row 1: RS - K1; *k2, yo, k2tog, k2; rep from * to last st, k1.

Row 2: Purl

Row 3: K1; *k2, skp, yo, k2; rep from * to last st, k1.

Row 4: Purl

Cont in patt and inc 1 st each end every 4th row 13 (14, 15, 14, 15, 16) times. 70 (72, 74, 78, 80, 82) sts (working inc sts into patt).

Patt straight until sleeve measures 30 (30, 30, 32, 32, 32)cm from beg, end with a WS row.

Shape top

Cast off 4 (4, 5, 5, 6, 6) sts beg next 2 rows.

Dec 1 st each end next 12 rows.

Dec 1 st each end every other row 3 (4, 4, 5, 5, 6) times.

Dec 1 st each end next 8 rows.

Cast off 4 sts beg next 2 rows.

Cast off loosely rem 8 (8, 8, 10, 10, 10) sts.

MAKING UP

Join shoulder seams.

FRONT BAND

With RS facing of garment and 4.50mm needles, beg at lower right front edge, pick up and k evenly 70 (70, 70, 72, 72, 72) sts to marker, 40 (40, 40, 42, 44, 44) sts to shoulder seam, 38 (38, 38, 40, 40, 42) sts across back to shoulder, 40 (40, 40, 42, 44, 44) sts down left front neck to marker, 70 (70, 70, 72, 72, 72) sts down to cast-on edge. 258 (258, 258, 268, 272, 274) sts.

Next Row: WS - K.

Next Row: RS - K10 (10, 10, 11, 11, 11); k2tog, yo; (k16, k2tog, yo) 3 times; k to end.

Garter Stitch (k every row) for 3 more rows.

Cast off loosely in k using larger needle.

Insert sleeve tops. Join side and sleeve seams. Sew on buttons.

Wentworth Distributors NZ Ltd
Free phone AU: 1800 150 542
Free phone NZ: 0800 738 998
www.naturallyyarnsnz.com

MISSED A COPY?

Please send me: ☐ AK6_1 ☐ AK6_2 ☐ AK6_3
☐ AK6_4 ☐ AK7_1 ☐ AK7_2

\$9.95 each (Plus \$2.95 P & H for 1-2 copies, 3 or more \$4.95)

Name:

Address:

Suburb:

State: P/code:

Card holder's name:

Payment options:

1. I enclose a cheque/money order made payable to:

Woodlands Publishing Pty Ltd for \$.....

2. Please debit my ☐ Visa ☐ Mastercard

Card No ____ / ____ / ____ / ____ Expiry: ____ / ____

Signature:

Post to: Australian Knitting Magazine, PO Box 8035, Glenmore Park NSW 2745 Ph: 02 4722 2260 Fax: 02 4733 8583



Australian Knitting

CLICK
HERE
NEXT

Asymmetric Poncho

A simple rectangle

YARN

- 6 x 50g balls of Jo Sharp Mulberry Silk Georgette yarn

NEEDLES AND TOOLS

- 3.75mm knitting needles

MEASUREMENTS

Width: 60cm, Length: 120cm

Finished size: 60cm x 60cm

SPECIAL ABBREVIATIONS

yfrn (yarn forward and round needle)
Yarn forward then wrap the yarn right round the needle, finishing at the front.

yfrn2 (yarn forward and round needle twice)
Yarn forward then wrap the yarn right round the needle twice, finishing at the front.

TENSION

20 sts by 32 rows over Wave Stitch on 3.75mm needles to 10cm.

GETTING STARTED

This poncho is made from a simple rectangle, folded and sewn along one edge, with a gap remaining at one side for neck opening. The fabric is made using wave stitch, which involves winding the yarn around the needle once or twice on some stitches. Correct tension is most important. To avoid disappointment, it is advisable to experiment with the technique on a small test piece before casting on for the project.

WORKING PATTERN

PONCHO (1 PIECE)

Using 3.75mm needles cast on 122 sts.

Row 1: RS - Knit

Row 2: Knit

Row 3: K1 *K1, yfrn2, (K1, yfrn) twice, K6, (K1, yfrn) twice, K1, yfrn2; rep from * to last st, K1.

Row 4: Knit, dropping yfrn's off needle.

Row 5: Knit

Row 6: Knit

Row 7: K1 *K3, (K1, yfrn) twice, (K1, yfrn2) twice, (K1, yfrn) twice, K3, rep from * to last st, K1.

Row 8: Knit, dropping yfrn's off needle.

These 8 rows form patt rep. Work in pattern repeat until length measures approx 120cm and finishing on row 8. Cast off.

MAKING UP

Fold poncho in half to form a square, RS together. Sew selvage edge using edge to edge stitch (starting at the open edge and working towards fold) and leaving a neck opening of approx 25cm. Stitch this one seam only.

Jo Sharp

www.josharpatterns.com



V-Neck Top

Design by Gitta Schrade for Naturally Yarns

YARN

- 2, 3, 3, 3, 3, 3, 4 balls 100gm
Crazy Mohair in shade #2040

NEEDLES AND TOOLS

- 5.00mm knitting needles
- 5.50mm knitting needles
- Stitch holder

MEASUREMENTS

To fit bust: 81, 86, 91, 96, 102, 107, 112cm

Finished fit: 89, 94, 99, 104, 109, 114, 120cm

Garment length: 51, 52, 53, 53, 54, 54, 55cm

Sleeve length: 19, 19, 19, 20, 20, 20, 20cm

SPECIAL ABBREVIATIONS

skp - slip 1 stitch, knit 1 stitch, pass the slipped stitch over;

TENSION

16 sts by 22 rows over Stst on 5.50mm needles to 10cm.

WORKING PATTERN

BACK

With 5.50mm needles, cast on 78 (82, 86, 90, 94, 98, 102) sts.

Row 1: RS - K2; *p2, k2; rep from * to end.

Row 2: P2; *k2, p2; rep from * to end.

Row 3: P2; *k2, p2; rep from * to end.

Row 4: K2; *p2, k2; rep from * to end.

Rep these 4 rows twice more.
Stst 4 rows.

Next Row: RS - (K12 (13, 14, 14, 15, 16, 16) sts, skp) twice, k22 (22, 22, 26, 26, 26, 30); (k2tog, k12 (13,





◀ V-Neck Top continued.

14, 14, 15, 16, 16) sts) twice - 74 (78, 82, 86, 90, 94, 98) sts.
Beg with a purl row on WS, Stst 5 rows.

Next Row: RS - (K11 (12, 13, 13, 14, 15, 15) sts, skp) twice, k22 (22, 22, 26, 26, 26, 30); (k2tog, k11 (12, 13, 13, 14, 15, 15) sts) twice. 70 (74, 78, 82, 86, 90, 94) sts.
Cont in Stst until piece measures 30cm from beg, end with a WS row.

Shape Underarms and Sleeves

Cast on 10 sts next 6 rows 130 (134, 138, 142, 146, 150, 154) sts.

Next Row: RS - (K2, p2) twice; k to last 8 sts, (p2, k2) twice.

Next Row: WS - (P2, k2) twice; p to last 8 sts, (k2, p2) twice.

Next Row: (P2, k2) twice; k to last 8 sts, (k2, p2) twice.

Next Row: (K2, p2) twice; p to last 8 sts, (p2, k2) twice.

Rep these last 4 rows until piece measures 47 (48, 49, 49, 50, 50,

51)cm from beg, end with a WS row.
Cast off 10 sts beg next 8 rows.

Cast off 11 (12, 14, 16, 17, 19, 21) sts beg next 2 rows. 28 (30, 30, 30, 32, 32, 32) sts.

Leave rem sts on holder.

FRONT

With 5.50mm needles, cast on 78 (82, 86, 90, 94, 98, 102) sts.

Row 1: RS - K2; *p2, k2; rep from * to end.

Row 2: P2; *k2, p2; rep from * to end.

Row 3: P2; *k2, p2; rep from * to end.

Row 4: K2; *p2, k2; rep from * to end.

Rep these 4 rows twice more.

Stst 4 rows.

Next Row: RS - (K12 (13, 14, 14, 15, 16, 16) sts, skp) twice, k22 (22, 22, 26, 26, 26, 30); (k2tog, k12 (13, 14, 14, 15, 16, 16) sts) twice. 74 (78, 82, 86, 90, 94, 98) sts.

Beg with a purl row on WS, Stst 5 rows.

Next Row: RS - (K11 (12, 13, 13, 14, 15, 15) sts, skp) twice, k22 (22, 22, 26, 26, 26, 30); (k2tog, k11 (12, 13, 13, 14, 15, 15) sts) twice - 70 (74, 78, 82, 86, 90, 94) sts.

Cont in Stst until piece measures 30cm from beg, end with a WS row.

Shape Underarms and Sleeves

Cast on 10 sts next 6 rows 130 (134, 138, 142, 146, 150, 154) sts.

Next Row: RS - (K2, p2) twice; k to last 8 sts, (p2, k2) twice.

Next Row: WS - (P2, k2) twice; p to last 8 sts, (k2, p2) twice.

Next Row: (P2, k2) twice; k to last 8 sts, (k2, p2) twice.

Next Row: (K2, p2) twice; p to last 8 sts, (p2, k2) twice.

Mark centre of last row.

Shape Neck

Next Row: RS - Keeping sleeve edge sts correct, work to centre front marker, TURN, on these sts only (leave rem sts on holder).

Next Row: WS - P to last 8 sts, patt 8.

Keeping sleeve edge 8 sts correct, dec 1 st at neck edge next 14 (15,

15, 15, 16, 16, 16) RS rows. 51 (52, 54, 56, 57, 59, 61) sts.

Keeping sleeve edge correct, cont straight until front measures 47 (48, 49, 49, 50, 50, 51)cm from beg, end with a WS row.

Cast off 10 sts beg next 4 RS rows.

Cast off 11 (12, 14, 16, 17, 19, 21) sts beg next RS row.

With RS facing, return to rem sts, rejoin yarn at neck edge, k to last 8 sts, patt 8.

Next Row: WS - Patt 8, p to end.

Keeping sleeve edge 8 sts correct, dec 1 st at neck edge next 14 (15, 15, 15, 16, 16, 16) RS rows. 51 (52, 54, 56, 57, 59, 61) sts.

Keeping sleeve edge correct, cont straight until front measures 47 (48, 49, 49, 50, 50, 51)cm from beg, end with a RS row.

Cast off 10 sts beg next 4 WS rows.

Cast off 11 (12, 14, 16, 17, 19, 21) sts beg next WS row.

MAKING UP

Join left shoulder and upper sleeve seam.

NECKBAND

With 5.50mm needles and RS facing, k the back neck holder 28 (30, 30, 30, 32, 32, 32) sts, pick up and k 30 (31, 33, 33, 35, 35, 37) sts down front neck (leave centre marker in place) and 30 (31, 33, 33, 35, 35, 37) sts up front neck. 88 (92, 96, 96, 102, 102, 106) sts.

K1, p1 rib 1 row.

Next Row: RS - Rib to 2 sts before centre front marker, k2tog, skp, rib to end.

Rib 1 more row.

Change to 5.00mm needles.

Stst for 4 rows.

Cast off loosely, use larger needle if required.

Join right upper sleeve, shoulder and neckband seams. Join side seams.

Wentworth Distributors NZ Ltd

Free phone AU: 1800 150 542

Free phone NZ: 0800 738 998

www.naturallyyarnsnz.com

Mock Plait Scarf

Designed by Patons



YARN

- 3 balls 50gm Patons Brushed Ombre in Denim Scape 5405

NEEDLES AND TOOLS

- 7.00mm knitting needles.
- Wool sewing needle

MEASUREMENTS

Length 220cm
Width 18cm

TENSION

13 sts by 24 rows over garter st, on 7.00mm needles to 10cm.

WORKING PATTERN

SCARF

Beg First Section

Using 7.00mm needles, cast on one st.

Row 1: Inc knitways in st. 2 sts. Working in garter st (every row knit), inc one st at beg of every row, until there are 36 sts.

Beg Short Row Patt

Row 1: Inc in first st, K2tog, turn.

Row 2 and foll alt rows: Knit to end.

Row 3: Inc in first st, K1, K2tog, turn.

Row 5: Inc in first st, K2, K2tog, turn.

Row 7: Inc in first st, K3, K2tog, turn.

Cont in this manner (working one st more before dec in every foll alt row) until the row 'Inc in first st, K21, K2tog, turn' has been worked.

Next Row: Knit to end.

Next Row: Inc in first st, K22, K2tog, knit across rem sts to end. 36 sts.

**** Next Row:** Inc in first st, K10, K2tog, turn.

Next Row: Knit to end.

Next Row: Inc in first st, K11, K2tog, turn.

Cont in this manner (working one st more before dec in every foll alt row) until the row 'Inc in first st, K21, K2tog, turn' has been worked.

Next Row: Knit to end.

Next Row: Inc in first st, K22, K2tog, knit across rem sts to end. 36 sts. **

Rep from ** to ** 21 times.

Beg Final Section

Next Row: Inc in first st, K10, K2tog, turn.

Next Row: Knit to end.

Next Row: Inc in first st, K11, K2tog, turn.

Cont in this manner (working one st more before dec in every foll alt row) until the row 'Inc in first st, K15, K2tog, turn' has been worked.

Next and foll alt rows: Knit to end. 36 sts.

Next Row: K2tog, K15, K2tog, turn. 34 sts.

Next Row: K2tog, K14, K2tog, turn.

Next Row: K2tog, K13, K2tog, turn.

Cont in this manner (working one st less between dec in every foll alt row) until the row 'K2tog, K1, K2tog, turn' has been worked.

Next Row: Knit to end. 6 sts.

Next Row: (K2tog) twice, turn.

Next Row: Knit to end. 4 sts.

Next Row: Sl 1, K2tog, psso, K1. 2 sts.

Next Row: K2tog. Fasten off.

MAKING UP

Do not press. Sew in ends.

Patons

Ph: 1800 337 032

www.patonsyarns.com.au



 **Patons**

Australian Knitting

CLICK
HERE
NEXT

Cerise Cowl



Designed by Cheryl Gardner
for Banksia Yarns.

YARN

- 1 ball Heirloom Merino Magic Chunky

NEEDLES AND TOOLS

- 6.5mm crochet hook

MEASUREMENTS

Size approx. 40cm x 12cm

SPECIAL ABBREVIATIONS

*fp*tr = working from front, work 1tr
around post of next tr

*bp*tr = working from back, work 1tr
around post of next tr

TENSION

Not critical to project.

WORKING PATTERN

Make 80 ch.

Row 1: 1tr in 4th ch from hook. 1tr in
ea ch to end, join with a sl st to beg
ch, forming a ring.

Round 1: 3ch, (1fp^{tr} in next tr twice,
1bp^{tr} in next tr twice), rep to end of
round, joining with a sl st to beg ch.

Round 2: work 1 fp^{tr} over ea fp^{tr} of
previous round, 1bp^{tr} over ea bp^{tr} of
previous round, rep to end of round,
joining with a sl st to beg ch.

Repeat 2nd round until work measures
approx. 12cm.

MAKING UP

Finish off and sew in ends.

Banksia Yarns
Shop 7 Magnolia Mall
285 Windsor St
Richmond NSW
Ph: 0401 279 853
Email: shop@banksiayarns.com.au
www.banksiayarns.com.au

Cropped Jacket

A fine ply cropped jacket

YARN

- 9, 10, 11 balls 50gm Patons Bluebell 5ply in 0100 Cream

NEEDLES AND TOOLS

- 3.00mm knitting needles
- 3.25mm knitting needles
- 3.25mm circular knitting needle 80cm
- Cable needle
- Wool sewing needle

MEASUREMENTS

Size: XS, S, M

To fit bust: 70, 80, 90cm

Finished fit: 88, 96, 104cm

Garment length: 40, 41, 42cm

Sleeve length: 37cm

SPECIAL ABBREVIATIONS

Cable = slip next 3 sts onto cable needle and leave at front of work, K2, then K3 from cable needle, slip next 2 sts onto cable needle and leave at back of work, K3, then K2 from cable needle.

TENSION

26 sts by 47 rows over double moss st, on 3.25mm needles to 10cm.

GETTING STARTED

Note: This jacket is worked on smaller needles and at a firmer tension than usually recommended for this yarn.

A circular needle has been used to accommodate the large number of sts. Work backwards and forwards in rows not rounds. If desired, change to pair of needles after dividing for Back and Fronts.

WORKING PATTERN

JACKET (WORKED IN ONE PIECE TO ARMHOLES)

Using 3.25mm circular needle, cast on 246 (266, 286) sts.

Row 1: K2, * P2, K2, rep from * to end.

Row 2: P2, * K2, P2, rep from * to end.

Row 3: As 2nd row.

Row 4: As 1st row.

Last 4 rows form double moss st. Work a further 4 rows.

Beg Patt

Row 1: (K2, P2) twice, K10, * P2, K2, rep from * to last 20 sts, P2, K10, (P2, K2) twice.

Row 2: (P2, K2) twice, P10, * K2, P2, rep from * to last 20 sts, K2, P10, (K2, P2) twice.

Row 3: P2, K2, P2, K14, P2, * K2, P2, rep from * to last 20 sts, K14, P2, K2, P2.

Row 4: K2, P2, K2, P14, K2, * P2, K2, rep from * to last 20 sts, P14, K2, P2, K2.

Row 5: (K2, P2) twice, Cable, * P2, K2, rep from * to last 20 sts, P2, Cable, (P2, K2) twice.

Row 6: As 2nd row. ▶



 **Patons**

**CLICK
HERE
NEXT** →



◀ **Red Classic Cardigan continued.**

Rep 3rd and 4th rows once, then 1st and 2nd rows once.

Row 11: (P2, K2) twice, Cable, * K2, P2, rep from * to last 20 sts, K2, Cable, (K2, P2) twice.

Row 12: As 4th row.

Last 12 rows form patt for rem.

Cont in patt until Jacket measures 24cm from beg, working last row on wrong side.

Divide for Back and Fronts

Keeping patt correct, cont as folls:

Next Row: Patt 58 (63, 67), cast off next 10 (10, 12) sts, patt 110 (120, 128) incl st rem on right-hand needle after casting off, cast off next 10 (10, 12) sts, patt to end.

Cont on last 58 (63, 67) sts for Left Front.

Shape Raglan Armhole

Dec one st at armhole edge in every row 0 (2, 4) times, then in every foll alt row until 35 (36, 38) sts rem.

Shape Neck

Next Row: WS - Cast off 13 (14, 14) sts, patt to end. 22 (22, 24) sts.

Dec one st at armhole edge in next row, then in every foll alt row twice, at same time dec one st at neck edge in next 5 rows. 14 (14, 16) sts.

Dec one st at each end of every foll alt row until 2 sts rem.

Work 1 row.

Next Row: K2tog. Fasten off.

With WS facing, join yarn to centre 110 (120, 128) sts for Back and patt to end.

Shape Raglan Armholes

Dec one st at each end of next row, then in every foll 4th row 3 (2, 0) times, then in every foll alt row until 42 (44, 46) sts rem.

Cast off in patt on WS.

With WS facing, join yarn to rem 58 (63, 67) sts for Right Front.

Shape Raglan Armhole

Dec one st at armhole edge in every row 0 (2, 4) times, then in every foll alt row until 36 (37, 39) sts rem.

Work 1 row.

Shape Neck

Next Row: RS - Cast off 13 (14, 14) sts, patt to last 2 sts, patt 2tog. 22 (22, 24) sts.

Dec one st at armhole edge in every foll alt row 3 times, at same time dec one st at neck edge in next 5 rows. 14 (14, 16) sts.

Dec one st at each end of every foll alt row until 2 sts rem.

Work 1 row.

Next Row: K2tog. Fasten off.

LEFT SLEEVE

Using 3.25mm needles, cast on 58 (62, 66) sts.

Work 8 rows double moss st as for Jacket.

Keeping double moss st correct and working extra sts into patt, inc one st at each end of next row, then in every foll 8th row until there are 82 (80, 78) sts, then in every foll 6th row until there are 90 (96, 102) sts.

Cont without further shaping until Sleeve measures 37cm from beg (noting that this length is 6cm shorter than standard), working last row on WS.

Shape Raglan

Cast off 6 (6, 7) sts at beg of next 2 rows. 78 (84, 88) sts.

Dec one st at each end of next row, then in every foll alt row until 12 sts rem.**

Shape Top

Next Row: Cast off 2 sts, patt to end.

Next Row: Patt 2tog, patt to end.

Rep last 2 rows twice. 3 sts.

Cast off on wrong side.

RIGHT SLEEVE

Work as for Left Sleeve to **.

Work 1 row.

Shape Top

Next Row: Cast off 2 sts, patt to last 2 sts, patt 2tog.

Next Row: Patt to end.

Rep last 2 rows once, then first of these rows once. 3 sts.

Cast off on wrong side.

NECKBAND

Using 3.25mm needles, cast on 114 (118, 122) sts.

Work 6 rows double moss st as for Jacket.

Change to 3.00mm needles.

Work 10 rows.

Change to 3.25mm needles.

Work 6 rows.

Cast off in patt.

MAKING UP

Do not press. Join sleeve seams.

Join raglan seams, noting that tops of sleeves form part of neckline.

Sew cast-on edge of neckband to neck edge.

Fold neckband in half to wrong side and slip-stitch in position.

Oversew ends of neckband.

Patons

Ph: 1800 337 032

www.patonsyarns.com.au

Waistcoat

Design by Wendy Wools

YARN

- 2 (2, 2, 2, 2, 3, 3, 3, 4, 4, 4) balls
100gm Wendy Room or Roam Fusion
4ply in shade #2003
- 5, 6 buttons for waistcoat

NEEDLES AND TOOLS

- 2.75mm knitting needles
- 3.25mm knitting needles
- Stitch holder

MEASUREMENTS

To fit bust: 61, 66, 71, 76, 81, 86,
91, 97, 102, 107, 112 cm
Finished fit: 66.5, 71, 77, 81, 87, 91,
97.5, 102, 107.5, 117.5 cm
Garment length: 38, 42, 47, 52, 56,
59.5, 64.5, 67.5, 70, 71, 72.5 cm

TENSION

28 sts by 36 rows over st st on
3.25mm needles to 10 cm

GETTING STARTED

As this design is given in 11 sizes,
we suggest that you underline all the
figures for the size you require before
commencing.

BACK

Work as instructions given for Back of
Slipover, but cast off remaining sts.

LEFT FRONT

Using 2.75mm needles, cast on 43
(45, 49, 53, 57, 59, 63, 67, 71, 73,
77) sts.

Work 5 (5, 5, 6.5, 6.5, 6.5, 6.5, 7.5,
7.5, 7.5, 7.5) cm in rib as given for
Back, finish on a 2nd row, inc 1 st
at end (beg for Right Front) of last
row for sizes (66, 71, 86, 91, 107,
112) cm. (26, 28, 34, 36, 42, 44)
inch. 43 (46, 50, 53, 57, 60, 64, 67,
71, 74, 78) sts.

Change to 3.25mm needles and st st.
Continue in st st until Front measures
same as Back to armholes finishing on
a P row (work 1 more row for Right
Front).

Shape Armhole

Next Row: Cast off 7 sts, work to end
36 (39, 43, 46, 50, 53, 57, 60, 64,
67, 71) sts.

Work 1 row (omit this row for Right
Front).

Shape Front

Dec 1 st at armhole edge on every
row at the same time dec 1 st at Front

edge on the next and every following
alt row until 25 (28, 32, 38, 41, 45,
48, 49, 50, 52, 51) sts remain.

**61 (66, 71, 76, 81, 86, 91, 107)
cm only**

Dec 1 st at Front edge only on every
following alt row from previous dec
until 16 (19, 23, 31, 34, 38, 46, 50)
sts remain finishing on a P row. ►



CLICK
HERE
NEXT ►

◀ **Waistcoat continued.**

All Sizes

Dec 1 st at Front edge only on every following 4th row from previous dec until 13 (15, 18, 22, 25, 28, 31, 32, 33, 34, 35) sts remain.

Continue without further shaping until armhole measures same as Back to shoulders finishing at armhole edge.

Shape Shoulder

Cast off 6 (7, 9, 11, 12, 14, 15, 16, 16, 17, 17) sts at beg of next row. Work 1 row.

Cast off remaining 7 (8, 9, 11, 13, 14, 16, 16, 17, 17, 18) sts.

RIGHT FRONT

Work as instructions given for Left Front, noting bracketed exceptions.

Pressing: With wrong side facing, pin out all pieces to measurements given.

Press as instructions given on ball band.

WAISTCOAT

Join shoulder seams by top sewing.

Front Band

Using 2.75mm needles, cast on 11 (11, 11, 11, 13, 13, 13, 13, 13, 13, 13) sts.

Work in rib as given for Back until band is long enough when slightly stretched to fit up left front for Her and right front for Him, round back neck and down front to first front dec finishing on a 2nd Row.

Next Row: Buttonhole Row - Rib 5 (5, 5, 5, 6, 6, 6, 6, 6, 6, 6), yrn to make a st, dec 1 st, rib to end.

Mark positions for buttons on buttonband, the first one to correspond with buttonhole already worked, the last one 1 cm from lower edge and 2 (2, 2, 3, 3, 3, 3, 4, 4, 4, 4) more

equally spaced between. Continue in rib working buttonholes as before to correspond with positions marked for buttons.

Cast off in rib.

Pin front band into position, sew on by top sewing. Sew on buttons.

ARMBANDS (BOTH ALIKE)

With RS facing, using 2.75mm needles, pick up and K91 (97, 103, 119, 125, 131, 147, 153, 159, 159, 159) sts evenly round armhole edge.

Commencing on a 2nd Row, work 9 (9, 9, 9, 13, 13, 13, 13, 13, 13, 13) rows in rib as given for Back. Cast off in rib.

Join side seams by top sewing.

Wentworth Distributors NZ Ltd
Free phone AU: 1800 150 542
Free phone NZ: 0800 738 998
www.naturallyyarnsnz.com

Crochet Shawl

Design by Gitta Schrade
for Naturally Yarns

YARN

- 1 ball each 25gm Delight shade #01, 02, 04, 05, 06, 07, 08, 10, 12
- 2 balls 25gm Delight in shade #03
- 3 balls 25gm Delight in shade #09

NEEDLES AND TOOLS

- 3.50mm crochet hook
- Wool sewing needle

MEASUREMENTS

Length approx 196cm

Width approx 51cm

SPECIAL ABBREVIATIONS

dc - double crochet;

dtr - double treble;

hdc - half double crochet;

tr - treble;

htr - half treble;

trtr - triple treble

Cluster Terms

cl3dtr - cluster 3 double treble crochet = the last loop of each of the first 2 dtr remains on the hook and then gets finished off together with 3rd dtr.

cl4dtr - cluster 4 double treble crochet = the last loop of each of the first 3 dtr remains on the hook and then gets finished off together with 4th dtr.

cl5dtr - cluster 5 double treble crochet = the last loop of each of the first 4 dtr remains on the hook and then gets finished off together with 5th dtr.

TENSION

1 completed Flower Square using 3.5mm crochet hook measures 10cm square.

1 completed Framed Flower Square using 3.5mm crochet hook measures 15cm square.

1 completed Mini Flower Square using 3.5mm crochet hook measures 5cm square.

GETTING STARTED

Note: Below instructions refer to the different shades by "names" rather than numbers for easier identification while working each square.

The "names" are as following: Shade #01 = Teal; #02 = Crème; #03 = Tan; #04 = Orange; #05 = Mauve; #06 = Pink; #07 = Sage; #08 = Red; #09 = Grey; #10 = Blue; #12 = Black.

Recommendation: In some of the shades used, the delicate stitches will be easier to see than in others, therefore we recommend to maybe start out with the lighter coloured squares.

WORKING PATTERN **FLOWER SQUARE USE SHADES AS FOLLOWING:**

A1 - make 3 squares of: Chain Ring and Round 1: Red; ▶

PLACEMENT CHART

A6		B4		C9	C2	B1								
C3	C13			A1										
A7		C6	B3		C13	C5	A8							
		C2			A10		C7	C4						
B6		A9		C11	A3		A12							
				C14										
A5		A11		C2	A13		B7							
				C7										
C14	A2		B2		C3	B7								
C4					A14		C9	C13						
A4		C8	B5		A9		A9							
		C7							C11	C5				
B8		A13		A6		C1			C6	A7				
		A12				C2								
A3		C10	A11		B6		A1							
A14						A5		C4						
		C7	C11					C13						
C12	C6	B1		C8	A2		A10							
A7				C9										
						C11	C5	A13						
A8		C10	A14		B8									
		C3												
C13	B4		C4	A4		C8	A6							
C11			C1			C9								
C2			A12		C6	B5								
					C10									
		C5												
		A11		A9		A8								
C12	C10	A3		C8	B7		A7							
A1				C7										
C9	C3	B6		C14	C6	B2								
A2				A5										
		C8	C5	C4										





and Round 1: Black;
Rounds 2 and 3: Pink;
Round 4: Crème;
Rounds 5 and 6: Sage;
Round 7: Grey.

A7 - make 4 squares of: Chain Ring and Round 1: Sage;
Rounds 2 and 3: Tan;
Round 4: Crème;
Rounds 5 and 6: Red;
Round 7: Grey.

A8 - make 3 squares of: Chain Ring and Round 1: Black;
Rounds 2 and 3: Orange;
Round 4: Crème;
Rounds 5 and 6: Blue;
Round 7: Grey.

A9 - make 3 squares of: Chain Ring and Round 1: Crème;
Rounds 2 and 3: Red;
Round 4: Tan;
Rounds 5 and 6: Sage;
Round 7: Grey.

A10 - make 2 squares of: Chain Ring and Round 1: Blue;
Rounds 2 and 3: Pink;
Round 4: Crème;
Rounds 5 and 6: Tan;
Round 7: Grey.

A11 - make 3 squares of: Chain Ring and Round 1: Pink;
Rounds 2 and 3: Blue;
Round 4: Crème;
Rounds 5 and 6: Tan;
Round 7: Grey.

A12 - make 3 squares of: Chain Ring and Round 1: Orange;
Rounds 2 and 3: Teal;
Round 4: Sage;
Rounds 5 and 6: Crème;
Round 7: Grey.

A13 - make 3 squares of: Chain Ring and Round 1: Tan;
Rounds 2 and 3: Crème;
Round 4: Mauve;
Rounds 5 and 6: Blue;
Round 7: Grey.

A14 - make 3 squares of: Chain Ring and Round 1: Black;

Rounds 2 and 3: Sage;
Round 4: Tan;
Rounds 5 and 6: Orange;
Round 7: Grey.

A - FLOWER SQUARE (10CM SQUARE)

Please refer to shades to be used and amount of squares to be made as given in A1 to A14

Using 3.50mm crochet hook and quoted shade, ch 6, join to ring with sl st.

Round 1: RS - Ch 1, 16 dc into ring, join to ring with sl st into first dc; break off yarn. (16 dc)

Round 2: RS - Join quoted shade, ch 3 (counts as first tr), 2 tr into same space, (ch 3, skip 1 space, 3 tr into next space; rep from) 7 times; ch 3, join with sl st into 3rd ch at beg of round (24 sts plus 8 3-chain spaces)
Round 3: **Sl st back to centre of last** ch 3 space of round 2, (Ch 4, cl3dtr into 3tr of previous round, ch 4, sl st into ch 3 space) 8 times. (8 clusters) Break off yarn.

Round 4: Join quoted shade into 3 ch space of round 2 (this is also where sl st of Round 3 is); ch 5 (counts as one trtr), 2 dtr into same space; (dc 1 into top of next cluster, next 5 sts will be worked into same space: dtr 2, trtr 1, dtr 2 all into next chain 3 space of round 2) 7 times; dc 1 into top of next cluster, dtr 2 into same space as chain 4 at beg of round, join with sl st into to 5th ch at beg of round. (48 sts) Break off yarn.

Round 5: Join quoted shade into last dtr worked of round 4, ch 1, dc 3 into 5th ch of round 4, (dc 1 into each of next 5 spaces, work 3 dc into next trtr) 7 times; dc 1 into each of next 5 spaces, join with sl st into first dc. (64 sts)

Round 6: Ch 1, dc 1 each into next 2 spaces, htr 1 into next space, tr 1 into next space, dtr 1 into next space, dtr 1-ch 3-dtr 1 all into next space (above cluster), dtr 1 into next space, tr 1 into next space, htr 1 into next space; (dc 1 into each of next 9 spaces, htr 1 into next space, tr 1 into next space, dtr 1 into next space, dtr 1-ch 3-dtr 1 all into next space (above cluster), dtr 1 into next space, tr 1 into next space, htr 1 into next space) 3 times; dc 1

◀ Crochet Shawl continued.

Rounds 2 and 3: Crème;
Round 4: Blue;
Rounds 5 and 6: Black;
Round 7: Grey.

A2 - make 3 squares of: Chain Ring and Round 1: Black;
Rounds 2 and 3: Red;
Round 4: Blue;
Rounds 5 and 6: Crème;
Round 7: Grey.

A3 - make 3 squares of: Chain Ring and Round 1: Blue;
Rounds 2 and 3: Black;
Round 4: Tan;
Rounds 5 and 6: Sage;
Round 7: Grey.

A4 - make 2 squares of: Chain Ring and Round 1: Crème;
Rounds 2 and 3: Orange;
Round 4: Sage;
Rounds 5 and 6: Black;
Round 7: Grey.

A5 - make 3 squares of: Chain Ring and Round 1: Orange;
Rounds 2 and 3: Tan;
Round 4: Crème;
Rounds 5 and 6: Teal;
Round 7: Grey.

A6 - make 3 squares of: Chain Ring

into each of next 7 spaces; join with sl st into first dc made. (68 sts plus 4 3-chain corners) Break off yarn.

Round 7: Join quoted shade into last st, ch 1, work 1 htr into each space up to first 3-chain corner, (into 3-chain corner work the following 7 stitches: htr 3, tr 1, htr 3; now work 1 htr into each space up to next 3-chain corner) 3 times; into 3-chain corner work the following 7 stitches: htr 3, tr 1, htr 3; now work 1 dc into each space to end of round, join with sl st into ch. (96 sts) Fasten off.

FRAMED FLOWER USE SHADES AS FOLLOWING:

B1 - make 2 squares of: Chain Ring and Round 1: Pink;

Round 2: Sage;

Rounds 3 and 4: Teal;

Round 5: Sage;

Round 6: Grey.

B2 - make 2 squares of: Chain Ring and Round 1: Teal;

Round 2: Mauve;

Rounds 3 and 4: Sage;

Round 5: Mauve;

Round 6: Grey.

B3 - make 2 squares of: Chain Ring and Round 1: Sage;

Round 2: Teal;

Rounds 3 and 4: Pink;

Round 5: Teal;

Round 6: Grey.

B4 - make 2 squares of: Chain Ring and Round 1: Blue;

Round 2: Tan;

Rounds 3 and 4: Sage;

Round 5: Tan;

Round 6: Grey.

B5 - make 2 squares of: Chain Ring and Round 1: Sage;

Round 2: Tan;

Rounds 3 and 4: Blue;

Round 5: Tan;

Round 6: Grey.

B6 - make 3 squares of: Chain Ring and Round 1: Red;

Round 2: Blue;

Rounds 3 and 4: Tan;

Round 5: Blue;

Round 6: Grey.

B7 - make 2 squares of: Chain Ring and Round 1: Crème;

Round 2: Black;

Rounds 3 and 4: Tan;

Round 5: Black;

Round 6: Grey.

B8 - make 2 squares of: Chain Ring and Round 1: Teal;

Round 2: Tan;

Rounds 3 and 4: Red;

Round 5: Tan;

Round 6: Grey.

B - FRAMED FLOWER SQUARE (15CM SQUARE)

Please refer to shades to be used and amount of squares to be made as given in B1 to B8

Using 3.50mm crochet hook and quoted shade, ch 8, join to ring with sl st.

Round 1: RS - Ch 4, cl4dtr, (ch 4, cl5dtr) 7 times, ch 4, join to ring with sl st into 3rd ch. Break off yarn. (8 clusters plus 8 4 chain spaces)

Round 2: RS - Join quoted shade into 4-ch space, ch 3 (counts as first tr), tr 4 into same chain space, (ch 2, into 4-chain work the following: cl5dtr, ch 4, cl5dtr; now cont ch 2, tr 5 into next 4-chain) 3 times; ch 2, into 4-chain work the following: cl5dtr, ch 4, cl5dtr; now cont ch 2, join with sl st into 3rd ch at beg of Round. Break off yarn.

Round 3: Join quoted shade into 3rd tr of last 5-tr group, ch 4 (counts as 1 dtr), dtr 1 each into next 2 spaces, (dtr 2 into next ch-2 space, ch 2; into 4-chain work the following: cl5dtr, ch 4, cl5dtr; now cont ch 2, dtr 2 into next ch-2 space, dtr 1 into each of the next 5 tr) 3 times; dtr 2 into next ch-2 space, ch 2, into 4-chain work the following: cl5dtr, ch 4, cl5dtr; now cont ch 2, dtr 2 into next ch-2 space, dtr 1 into each of the next 2 tr, join with sl st into 4th ch. (9 dtr straight with 2 ch each side and the 4 corner double clusters).

Round 4: Ch 4 (counts as 1 dtr), dtr 1 each into next 4 spaces, (dtr 2 into next ch-2 space, ch 2, into 4-chain work the following: cl5dtr, ch 4, cl5dtr; now cont ch 2, dtr 2

into next ch-2 space, dtr 1 into each of the next 9 spaces) 3 times; dtr 2 into next ch-2 space, ch 2, into 4-chain work the following: cl5dtr, ch 4, cl5dtr; now cont ch 2, dtr 2 into next ch-2 space, dtr 1 into each of the next 4 spaces, join with sl st into 4th ch. (13 dtr straight with 2 ch each side and the 4 corner double clusters). Break off yarn.

Round 5: Join quoted shade into same space (4th ch), ch 4 (counts as 1 dtr), dtr 1 each into next 6 spaces, (dtr 2 into next ch-2 space, ch 2, into 4-chain work the following: cl5dtr, ch 4, cl5dtr; now cont ch 2, dtr 2 into next ch-2 space, dtr 1 into each of the next 6 spaces, join with sl st into 4th ch. (17 dtr straight with 2 ch each side and the 4 corner double clusters). Break off yarn.

Round 6: Join quoted shade into last st, ch 1, work htr 1 into each space, (work htr 2 into 2-chain space, htr 1 into cluster and into 4-chain corner work the following 8 stitches: htr 3, tr 2, htr 3; now work 1 htr into next cluster, htr 2 into next 2-chain space and htr 1 into each space) cont in this manner to end of round, join with sl st into ch. (124 sts) Fasten off.

MINI FLOWER USE SHADES AS FOLLOWING:

C1 - make 2 squares of: Chain Ring and Round 1: Orange;

Round 2: Teal;

Round 3: Grey.

C2 - make 5 squares of: Chain Ring and Round 1: Sage;

Round 2: Orange;

Round 3: Grey.

C3 - make 5 squares of: Chain Ring and Round 1: Tan;

Round 2: Teal;

Round 3: Grey.

C4 - make 5 squares of: Chain Ring and Round 1: Pink;

Round 2: Sage;

Round 3: Grey. ►



C14 - make 3 squares of: Chain Ring and Round 1: Red;
Round 2: Tan;
Round 3: Grey.

C - MINI FLOWER SQUARE (5CM)

Please refer to shades to be used and amount of squares to be made as given in C1 to C14

Using 3.50mm crochet hook and quoted shade, ch 5, join to ring with sl st.

Round 1: RS - Ch 3, tr 1 into ring, ch 3, (tr 2 into ring, ch 3) 3 times, join to Round with sl st into 3rd ch. Break off yarn.

Round 2: RS - Join quoted shade into last space, ch 3; tr 1 into next space, (into next 3-ch corner work: tr 2, ch 3, tr 2; tr 1 into each of next 2 spaces) 3 times; into next 3-ch corner work: tr 2, ch 3, tr 2; join to Round with sl st into 3rd ch. Break off yarn. (24 tr plus 4 3-ch corners)

Round 3: Join quoted shade into last st, ch 1, work htr 1 into each space, (work the following 5 stitches into corner 3-ch arch: htr 2, tr 1, htr 2; now work htr 1 into each space to next chain corner) cont in this manner to end of Round, join with sl st into ch. (44 sts) Fasten off.

MAKING UP SHAWL

Make Flower Squares, Framed Flower Squares and Mini Flower Squares using shades as given above.

Join squares in order as given in diagram, easing in sides if needed to keep clean line-up (the photographed shawl has been slip stitched together on the WS using crochet hook).

Final Round: RS - Join Grey just past one corner, ch 1, *sc 1 into next space, ch 1, skip 1; rep from * around but do not skip spaces in corners where needed; cont in this manner to end of round join with sl st into ch. Fasten off.

Weave in ends.

Lay shawl out to measurements and block very gently.

Wentworth Distributors NZ Ltd
 Free phone AU: 1800 150 542
 Free phone NZ: 0800 738 998
www.naturallyyarnsnz.com

Crochet Shawl continued.

C5 - make 5 squares of: Chain Ring and Round 1: Black;
Round 2: Red;
Round 3: Grey.

C6 - make 5 squares of: Chain Ring and Round 1: Crème;
Round 2: Blue;
Round 3: Grey.

C7 - make 5 squares of: Chain Ring and Round 1: Red;
Round 2: Teal;
Round 3: Grey.

C8 - make 5 squares of: Chain Ring and Round 1: Teal;
Round 2: Orange;
Round 3: Grey.

C9 - make 5 squares of: Chain Ring and Round 1: Red;

Round 2: Mauve;
Round 3: Grey.

C10 - make 4 squares of: Chain Ring and Round 1: Sage;
Round 2: Red;
Round 3: Grey.

C11 - make 5 squares of: Chain Ring and Round 1: Orange;
Round 2: Black;
Round 3: Grey.

C12 - make 3 squares of: Chain Ring and Round 1: Blue;
Round 2: Tan;
Round 3: Grey.

C13 - make 6 squares of: Chain Ring and Round 1: Orange;
Round 2: Crème;
Round 3: Grey.

Man's Sweater

Designed by Patons

YARN

- 16, 17, 19, 21, 23, 26 balls
50gm Patons Chainette Aire in
Denim 4317

NEEDLES AND TOOLS

- 7.50mm knitting needles
- 7.00mm knitting needles
- 2 stitch-holders
- Wool sewing needle

MEASUREMENTS

Size: XS, S, M, L, XL, XXL

To fit chest: 85, 95, 105, 115, 125,
135cm

Finished fit: 90, 100, 110, 120, 130,
140cm

Garment length: 69, 70, 71, 72, 73,
74cm

Sleeve length: 48cm

TENSION

13 sts by 19 rows over stocking st, on
7.5mm needles to 10cm.

WORKING PATTERN

BACK

Using 7.00mm needles, cast on
61 (67, 73, 81, 87, 93) sts.

Row 1: K2, * P1, K1, rep from
* to last st, K1.

Row 2: K1, * P1, K1, rep from
* to end.

Rep last 2 rows 4 times, 10 rows rib
in all.

Change to 7.50mm needles.

Work in stocking st (beg with a knit
row) until Back measures 35cm from
beg, ending with a purl row.

Beg patt

Row 1: * K1, P1, rep from * to last st,
K1.

Row 2: * P1, K1, rep from * to last st,
P1.

Row 3: As 2nd row.

Row 4: As 1st row.

Last 4 rows form patt.

Work a further 20 rows patt. 24 rows
in all.

Shape Armholes

Keeping patt correct, cast off 3 (4, 5,
6, 7, 8) sts at beg of next 2 rows. 55
(59, 63, 69, 73, 77) sts.

Dec one st at each end of every row
until 51 (53, 55, 59, 61, 63) sts rem. **
Work 36 (37, 38, 39, 40, 41) rows.

Shape Shoulders

Cast off 5 (5, 5, 5, 6, 6) sts at beg of
next 4 rows, then 4 (5, 5, 6, 5, 5) sts
at beg of foll 2 rows.

Leave rem 23 (23, 25, 27, 27, 29)
sts on stitch-holder for neckband.

FRONT

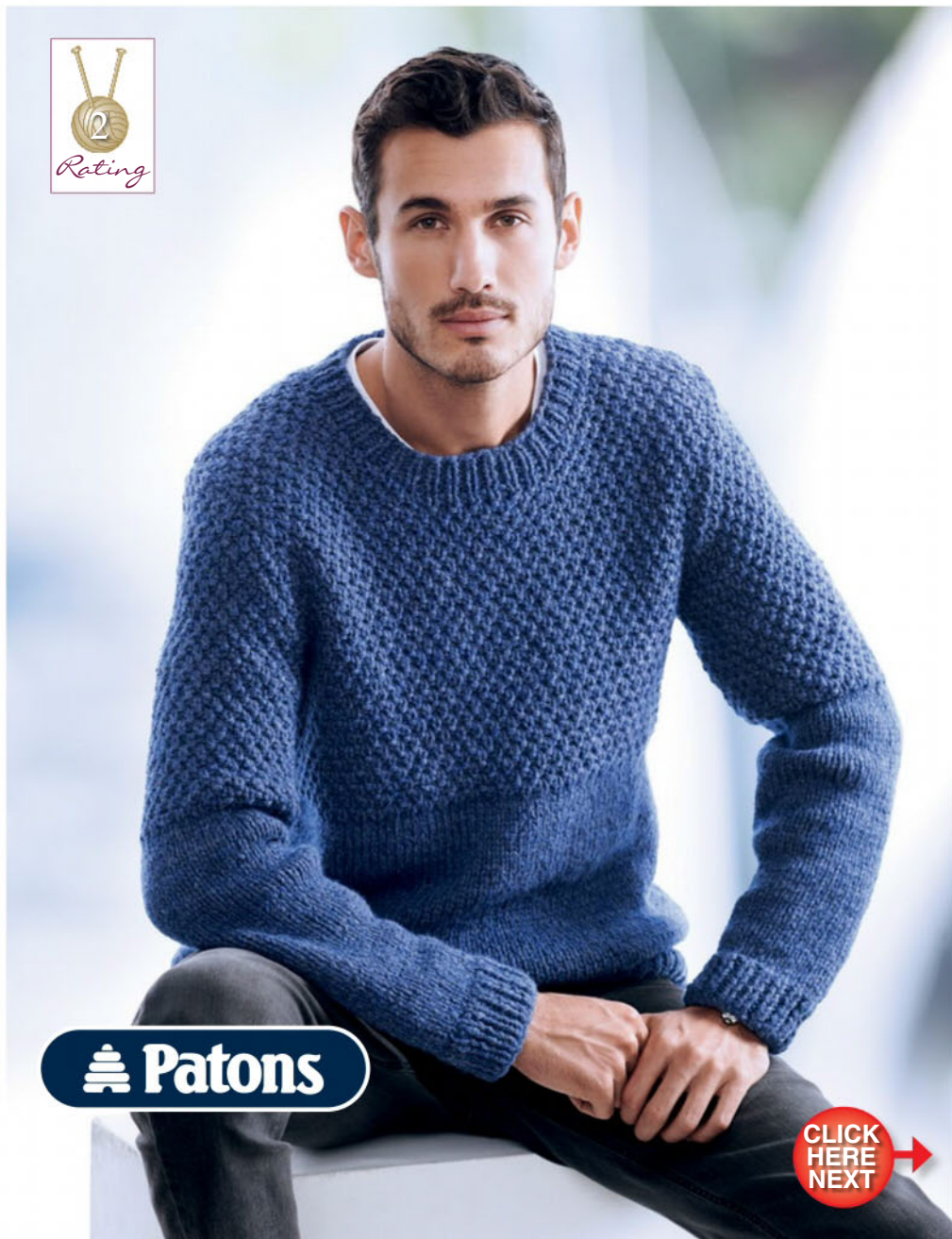
Work as for Back to **.

Work 18 (19, 18, 19, 20, 19) rows.

Shape Neck

Next Row: Patt 19 (20, 21, 22, 23,
24), turn.

Cont on these 19 (20, 21, 22, 23,
24) sts for left side of neck. ▶



Patons

CLICK
HERE
NEXT

Man's Sweater continued.

*** Dec one st at neck edge in every foll alt row until 14 (15, 15, 16, 17, 17) sts rem.
Work 7 rows.

Shape Shoulder

Cast off 5 (5, 5, 5, 6, 6) sts at beg of next row and foll alt row.

Work 1 row.

Cast off rem 4 (5, 5, 6, 5, 5) sts. *** Slip next 13 (13, 13, 15, 15, 15) sts onto stitch-holder and leave for neckband.

With RS facing, join yarn to rem sts and patt to end.

Cont on these 19 (20, 21, 22, 23, 24) sts for right side of neck.

Rep from *** to ***, working 1 row more before shoulder shaping.

SLEEVES

Using 7.00mm needles, cast on 33 (33, 35, 37, 37, 39) sts.

Work 10 rows rib as for Back.

Change to 7.50mm needles.

Work 2 rows stocking st.

Cont in stocking st, inc one st at each end of next row, then in every foll 8th (8th, 6th, 6th, 4th, 4th) row until there are 39 (45, 43, 53, 45, 53) sts, then in every foll 10th (10th, 8th, 8th, 6th, 6th) row until there are 45 (47, 51, 55, 59, 63) sts.

Work 9 (5, 5, 5, 1, 1) rows.

Beg patt

Work rem in patt as for Back, at same time inc one st at each end of next (5th, 3rd, 3rd, 5th, 5th) row, then in foll 10th (10th, 8th, 8th, 6th, 6th) row once. 49 (51, 55, 59, 63, 67) sts. Work 13 (9, 13, 13, 13, 13) rows without further shaping.

Shape Top

Keeping patt correct, cast off 2 (2, 3, 3, 4, 4) sts at beg of next 2 rows. 45 (47, 49, 53, 55, 59) sts.

Dec one st at each end of next row, then in every foll alt row until 23 (23,

23, 31, 31, 35) sts rem, then in every row until 9 sts rem.

Cast off.

NECKBAND

Join right shoulder seam. With RS facing and using 7.00mm needles, knit up 16 (16, 18, 18, 20, 22) sts evenly along left side of neck, knit across sts from front stitch-holder, knit up 16 (16, 18, 18, 20, 22) sts evenly along right side of neck, then knit across sts from back stitch-holder – dec one st in centre. 67 (67, 73, 77, 81, 87) sts. Work 5 rows rib as for Back, beg with a 2nd row.

Cast off loosely in rib.

MAKING UP

Do not press. Join left shoulder and neckband seam. Join side and sleeve seams. Sew in sleeves.

Patons

Ph: 1800 337 032

www.patonsyarns.com.au

Garter Stitch Snug

Design by Gitta Schrade for Naturally Yarns



YARN

- 3, 4, 4, 5, 5, 6 balls 50gm Mohair in shade #525
- 2 Incomparable Buttons: L515

NEEDLES AND TOOLS

- 5.50mm knitting needles
- Stitch holders and markers

MEASUREMENTS

To fit bust: 86, 91, 96, 102, 107, 112cm

Finished fit: 91, 96, 102, 107, 112, 117cm

Garment length: 38, 40, 41, 42, 43, 44cm

Sleeve length: 15, 15, 15, 16, 16, 16cm

SPECIAL ABBREVIATIONS

tbl – through back loop

Skp – slip 1 stitch knitwise, k 1 stitch, pass the slipped stitch over

TENSION

15 sts over Garter Stitch on 5.5mm needles to 10cm.

GETTING STARTED

Garment is worked from sleeve edge to sleeve edge.

WORKING PATTERN

BODY

Beg at left sleeve edge.

With 5.50mm needles, cast on 43 (43, 45, 45, 47, 47) sts.

Garter Stitch (= k every row) for 10 rows.

Cont in Garter Stitch and inc 1 st each end next row then every 3 (2.5, 3, 2.5, 3, 2.5)cm 2 (3, 2, 3, 3, 4) times more. 49 (51, 51, 53, 55, 57) sts.

Mark centre of last row (as reference point when working 2nd sleeve)

Garter Stitch straight until piece measures 15 (15, 15, 16, 16, 16)cm from beg, end with a WS row.

Mark centre of last row (for shoulder).

Cast on 16 (17, 18, 18, 19, 19) sts next 2 rows, then 17 (18, 19, 19, 19, 19) sts following 2 rows. 115 (121, 125, 127, 131, 133) sts.

Garter Stitch straight until piece

measures 17 (18, 19, 20, 21, 22)cm from marker, end with a WS row.

CENTRE BACK

Next Row: RS - K56 (59, 61, 62, 64, 65) sts, turn, on these sts only (leave rem 59 (62, 64, 65, 67, 68) sts on hold for left Front).

Garner Stitch straight over back sts for 12 (12, 13, 13, 14, 14)cm, end with a WS row.

Leave back sts on hold but do not break yarn.

LEFT FRONT

With RS facing rejoin yarn to left front sts and Garner Stitch for 14.5 (14.5, 15.5, 15.5, 16.5, 16.5)cm, end with a WS row.

Cast off loosely.

RIGHT FRONT

With 5.50mm needles, cast on 59 (62, 64, 65, 67, 68) sts.

Garner Stitch 7 rows.

Next Row: WS - K4, k2tog, yo twice, skp, k5 (5, 5, 6, 6, 7), k2tog, yo twice, skp; k to end.

Next Row: RS - K to first double yo, k the first yo and k-tbl the 2nd yo, work across 2nd buttonhole to match, k to end.

Garner Stitch until piece measure 14.5 (14.5, 15.5, 15.5, 16.5, 16.5) cm from beg, end with a WS row. Break yarn.

Complete Back and Right Front

With RS facing return to Back sts on hold.

Next Row: RS - K the 56 (59, 61, 62, 64, 65) back sts, Do Not Turn; k across the 59 (62, 64, 65, 67, 68) sts of right front. 115 (121, 125, 127, 131, 133) sts.

Garner Stitch straight until piece measures approx 15.5 (16.5, 17.5, 18.5, 19.5, 20.5)cm from marker, end with a WS row. Do count the Garner Stitch ridges on opposite side and ensure to end with 2 ridges less as there are still 4 rows to be worked.

Cast off loosely 17 (18, 19, 19, 19, 19) sts next 2 rows, then 16 (17, 18, 18, 19, 19) sts following 2 rows. 49 (51, 51, 53, 55, 57) sts.

Count Garner Stitch ridges on opposite side from centre sleeve marker to shoulder.

Work same amount of ridges (= 1 ridge 2 rows) to match.

Dec 1 st each end next row, then every 3 (2.5, 3, 2.5, 3, 2.5)cm 2 (3, 2, 3, 3, 4) times more. 43 (43, 45, 45, 47, 47) sts.

Garner Stitch 10 more rows.

Cast off loosely.

MAKING UP

Join side and sleeve seams.

Sew on buttons.

Wentworth Distributors NZ Ltd
Free phone AU: 1800 150 542
Free phone NZ: 0800 738 998
www.naturallyyarnsnz.com



Little Shrug

Design by Gitta Schrade for
Naturally Yarns

YARN

- 3, 3, 4, 5 balls 25g Delight
in shade #01

NEEDLES AND TOOLS

- 4.50mm knitting needles
- Markers

MEASUREMENTS

Size: S, M, L, X-L

Cuff to cuff: 90, 100, 120, 130cm

Back width: 50, 54, 58, 62cm

Back length: 44, 46, 48, 50cm

TENSION

20 sts in Pattern on 4.5mm needles
to 10cm.

SHRUG

With 4.50mm needles, cast on loosely
(or use larger needle) 90 (94, 98,
102) sts.

Row 1: RS - K2; *p2, k2; rep from
* to end.

Row 2: WS - P2; *k2, p2; rep from
* to end.

Rib 10 more rows.



CLICK
HERE
PREV.

Beg Main Pattern

Row 1: RS - K1; *k2, yo twice, k2; rep from * to last st k1.

Row 2: WS - K1; *p2tog, k1 into first yo on needle, p1 into next yo, p2tog; rep from * to last st, k1.

Row 3: RS - K1; *yo, k4, yo; rep from * to last st k1.

Row 4: K1; *p1, [p2tog] twice, k1; rep from * to last st, k1.

Rep these 4 rows for Main pattern until piece measures 86 (96, 116, 126)cm from beg, end with a row 2 or 4 of Main pattern (ensure to lay piece out to required width for measuring otherwise shrug will be to small at back).

Next Row: RS - K2; *p2, k2; rep from * to end.

Next Row: WS - P2; *k2, p2; rep from * to end.

Rib 10 more rows.

Cast off loosely (or use larger needle) in rib.

MAKING UP

Lay piece out flat and place marker (end of a row) for centre back (count eyelets between cuffs and divide in half, that will be the centre back).

Place another marker 25 (27, 29, 31)cm each side of the centre back marker (50 (54, 58, 62)cm for back width). These 2 markers will be referred to as markers 2 & 3.

Repeat the three-marker placement for opposite side.

Upper Edging

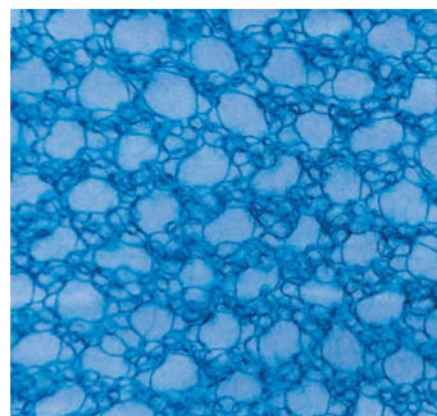
With RS facing and 4.50mm needles, pick up and k 114 (122, 130, 138) sts evenly between markers 2 & 3.

Row 1: WS - P2; *k2, p2; rep from * to end.

Row 2: RS - K2; *p2, k2; rep from * to end.

Rib 5 more rows.

Cast off loosely in rib (or use larger needle).



Lower Edging

Work as for upper edging.

Join seam from cuff to edging, then join the two sides of upper and lower edging.

Repeat for opposite side of garment.

Wentworth Distributors NZ Ltd
Free phone AU: 1800 150 542
Free phone NZ: 0800 738 998
www.naturallyyarnsnz.com



Clover

Distributors in Australia

Ascot Lane Distributors(Australia) Pty Ltd
www.ascotlane.com.au

Birch Haberdashery & Craft
www.birchhabby.com.au

QH Textiles Pty Ltd
www.qhtextiles.com

Distributor in New Zealand

Ascot Lane Distributors(NZ) Limited
www.ascotlanedistributorsnz.co.nz

CLOVER MFG. CO., LTD.

3-15-5 Nakamichi, Higashinari-ku, Osaka, Japan
www.clover-mfg.com
info@clover-mfg.com

Red Brick Cowl

Crochet Cowl Design
by Cheryl Gardner for
Banksia Yarns.

YARN

- 4 balls Heirloom Easycare 12 ply

NEEDLES AND TOOLS

- 6mm crochet hook

MEASUREMENTS

Size approx. 78 cm x 12 cm

SPECIAL ABBREVIATIONS

*fp*tr = working from front, work 1tr
around post of next tr

*bp*tr = working from back, work 1tr
around post of next tr

TENSION

Tension is not important for garment.

WORKING PATTERN

Make 108 ch.

Row 1: 1tr in 4th ch from hook. 1tr in
ea ch to end. Join with a sl st to beg
ch, forming a ring.

Round 1: 3ch, 1fp_{tr} in each of next
4 tr, (1bp_{tr} in ea of next 5 tr, 1 fp_{tr} in
ea of next 5 tr) rep to end of round,
joining with a sl st to beg ch.

Round 2: 3ch, (1fp_{tr} in ea fp_{tr} of
previous round, 1bp_{tr} in ea bp_{tr} of
previous round), rep to end of round,
joining with a sl st to beg ch.

Round 3: 3ch, (1bp_{tr} in ea fp_{tr} of
previous round, 1fp_{tr} in ea bp_{tr} of
previous round), rep to end of round,
joining with a sl st to beg ch.

Round 4: 3ch, (1bp_{tr} in ea bp_{tr}, 1
fp_{tr} in ea fp_{tr} of previous round, rep
to end of round, joining with a sl st to
beg ch.

Round 5: 3ch, (1fp_{tr} in ea bp_{tr} of
previous round, 1bp_{tr} in ea fp_{tr} of
previous round), rep to end of round,
joining with a sl st to beg ch.

Round 6: as 2nd round 7th round: as
3rd round 8th round: as 4th round.

MAKING UP

Finish off and sew in ends.

Banksia Yarns

Shop 7 Magnolia Mall, 285 Windsor St
Richmond NSW

Ph: 0401 279 853

Email: shop@banksiayarns.com.au

www.banksiayarns.com.au



CLICK
HERE
PREV.

String Top Envy

This quick little top can be knitted over the weekend. The pattern consists of two rectangles, sewn together at the shoulders and sides to create a simple top.

YARN

2 balls 50gm Jo Sharp Lumina in 813 Envy OR 811 Phoenix

NEEDLES AND TOOLS

8.00mm knitting needles

MEASUREMENTS

One Size Only

To fit bust: 80, 90, 100 cm

Finished fit: 70 cm stretches when worn

Garment length: 42 cm stretches when worn

TENSION

Work fabric loosely to match appearance of image. Tension is approximate due to the stretch factor of the fabric.

WORKING PATTERN

FRONT & BACK (MAKE 2) IN ENVY

Using 8.00mm needles, cast on 50 sts.

Row 1: Knit.

Row 2: Knit.

Row 3: Knit.

Row 4: K1, Yfon, K1, cont to end of row.

Row 5: K1, * drop the yfon, K1 *. Rep from * to * to end of row.

Row 6: Knit.

Repeat rows 3 - 6 until garment length is 42 cm

MAKING UP

Sew 5cm shoulder seams, working from edge on each side. Sew 10cm side seams, working from bottom edge.

VERSION 2

FRONT & BACK (MAKE 2) IN PHOENIX

Using 8.00mm needles, cast on 50 sts.

Row 1: K1, *yfon, K2tog*. Rep from * to * to last K1.

Row 2: Purl.

Row 3: K2, *yfon, K2tog *. Rep from * to * to end of row.

Row 4: Purl.

Rows 1 - 4 form pattern. Continue in pattern until one ball is used. Make the second side to match the first side.

MAKING UP

Sew 5cm shoulder seams, working from edge on each side. Sew 10cm side seams, working from bottom edge.

Jo Sharp

www.josharppatterns.com



CLICK
HERE
NEXT

Yoke Top

Design by Naturally Yarns



YARN

- 8, 9, 9, 10, 11, 12 balls 50gm
Loyal Pattern Prints DK 8ply in shade #3008

NEEDLES AND TOOLS

- 3.75mm knitting needles
- 4.00mm knitting needles
- 4.00mm circular needle 100cm length
- Stitch holders
- Markers

MEASUREMENTS

To fit bust 77-81 (84-89, 91-96,
101-106, 114-119, 124-129) cm
Finished fit 82 (90, 98, 109, 120,
131) cm
Garment length 64 (65, 66, 66, 67,
68) cm



SPECIAL ABBREVIATIONS

skp – slip 1 stitch, knit 1 stitch, pass the slipped stitch over;
M1 – lift strand between last st worked and next st onto left hand needle and k into the back of this strand to make 1 new st.

TENSION

22sts by 30 rows over Stocking Stitch on 4mm needles to 10cm.

GETTING STARTED

Note: For pattern print consistency knit all balls either from the inside or the outside. The individual look of an item depends on the size of the garment. The finished garment may vary in appearance compared with the leaflet image. Every garment is unique.

WORKING PATTERN

BACK

With 4.00mm needles, cast on 98 (110, 118, 130, 142, 154) sts.

Row 1: RS - K2; *p2, k2; rep from * to end.

Row 2: P2; *k2, p2; rep from * to end. Rib further 6 rows.

Stocking st until piece measures 10cm, end with a WS row.

****Next Row:** RS - K1, skp, k to last 3 sts, k2tog, k1.

Beg with a p row on WS, Stst 15 rows. **

Rep from ** to ** 3 (4, 4, 4, 4, 4) times more. 90 (100, 108, 120, 132, 144) sts.

Stocking st straight until piece measures 41cm from beg, end with a WS row.

Shape Underarms

Cast off 5 (6, 7, 8, 9, 10) sts beg of next 2 rows. 80 (88, 94, 104, 114, 124) sts.

Leave sts on hold (do not break off yarn).

FRONT

Work as for Back.

Leave sts on hold (break off yarn).

ARMHOLE BANDS (MAKE 2)

With 4.00mm needles, cast on 66 (70, 74, 78, 82, 86) sts.

Row 1: RS - K2; *p2, k2; rep from * to end.

Row 2: P2; *k2, p2; rep from * to end. Rib further 4 rows.

Shape Underarms

Cont in Stst and cast off 5 (6, 7, 8, 9, 10) sts beg of next 2 rows. 56 (58, 60, 62, 64, 66) sts.

Leave sts on hold (break off yarn).

YOKE

With 4.00mm circular needle and RS facing of pieces on hold, k the back holder 80 (88, 94, 104, 114, 124) sts, k the armhole band 56 (58, 60, 62, 64, 66) sts, k the front 80 (88, 94, 104, 114, 124) sts, k the 2nd armhole band 56 (58, 60, 62, 64, 66) sts. 272 (292, 308, 332, 356, 380) sts.

Beg with a p row on WS, Stst for 7 rows.

Next Row: RS - K2 (2, 0, 2, 4, 3), (k2tog, k7 (8, 9, 9, 9, 11)) 30 (29, 28, 30, 32, 29) times. 242 (263, 280, 302, 324, 351) sts.

Beg with a p row on WS, Stst for 9 (11, 11, 11, 11, 11) rows.

Next Row: RS - K2 (2, 0, 2, 4, 3), (k2tog, k6 (7, 8, 8, 8, 10)) 30 (29, 28, 30, 32, 29) times. 212 (234, 252, 272, 292, 322) sts.

Beg with a p row on WS, Stst for 9 rows.

Next Row: RS - K2 (2, 0, 2, 4, 3), (k2tog, k5 (6, 7, 7, 7, 9)) 30 (29, 28, 30, 32, 29) times. 182 (205, 224, 242, 260, 293) sts.

Beg with a p row on WS, Stst for 9 rows.

Next Row: RS - K2 (2, 0, 2, 4, 3), (k2tog, k4 (5, 6, 6, 6, 8)) 30 (29, 28, 30, 32, 29) times. 152 (176, 196, 212, 228, 264) sts.

Beg with a p row on WS, Stst for 9 (9, 7, 9, 9, 7) rows.

Sizes 91-96 (101-106, 114-119, 124-129) cm only

Next Row: RS - KO (2, 4, 3), (k2tog, k5 (5, 5, 7)) 28 (30, 32, 29) times. 168 (182, 196, 235) sts.

Beg with a p row on WS, Stst for 5 rows.



Size 124-129cm only

Next Row: RS - K3, (k2tog, k6) 29 times. 206 sts.

Beg with a p row on WS, Stst for 5 rows.

Sizes 84-89 (91-96, 101-106, 114-119, 124-129) cm only

Next Row: RS - KO (0, 2, 4, 6), (k2tog, k9 (40, 16, 10, 6)) 16 (4, 10, 16, 25) times. 160 (164, 172, 180, 181) sts.

Beg with a p row on WS, Stst for 1 (1, 1, 3, 3) rows and dec 0 (4, 4, 8, 5) sts evenly across last row - 160 (160, 168, 172, 176) sts.

Change to 3.75mm needles.

All sizes (over 152 (160, 160, 168, 172, 176) sts)

Next Row: RS - *K2, p2; rep from * to end.

Next Row: WS - *K2, p2; rep from * to end.

Rib 4 more rows.

Cast off loosely in rib.

MAKING UP

Join sides, underarms, armhole bands and yoke seam.

Wentworth Distributors NZ Ltd
Free phone AU: 1800 150 542
Free phone NZ: 0800 738 998
www.naturallyyarnsnz.com

SUBSCRIBE &

Save 34% off the cover price!



CLICK
HERE
PREV.

SAVE!

**7 issues
for only
\$45.00**

4 EASY WAYS TO SUBSCRIBE



(02) 4722 2260
and quote 7 issue magazine offer



www.wpcoco.com.au



Fill in the form & freepost to:
Woodlands Publishing
Reply Paid 8035
Glenmore Park 2745



Fax to: **(02) 4733 8583**

Australian Knitting

Yarn • Embellishments • Patterns

subscription order form



I would like to subscribe to 7 issues of
Australian Knitting starting with the next
available issue.

1. YOUR DETAILS

TITLE ☐ MR ☐ MRS ☐ MS ☐ MISS

Name _____

Address _____

State _____ Postcode _____

Email _____

Telephone (inc. area code) _____

2. PLEASE TICK ONE BOX

- ☐ **AUSTRALIA:** 7 Issues of Australian Knitting for AUD \$45.00
- ☐ **NEW ZEALAND:** 7 Issues of Australian Knitting for AUD \$65.00
- ☐ **BEST OF THE WORLD:** 7 Issues of Australian Knitting for
AUD \$85.00

Prices include GST. *Subscriptions will start with the first available issue. Existing subscriptions will simply be extended. If your order is cancelled before all issues are received, payment will be pro-rated over the total number of issues available as part of the offer for the purpose of calculating any refund due.

3. METHOD OF PAYMENT

☐ Cheque/Money Order (Aust. only)

I enclose a cheque/money order made payable to
Woodlands Publishing Pty Ltd (ABN 30 115 093 162) for \$

Please debit my: ☐ Mastercard ☐ Visa

Card No

□ □ □ □ □ □ □ □ □ □ □ □ □ □ □ □

Expiry date □ □ / □ □

Cardholder name (PLEASE PRINT) _____

Signature _____ Date _____

FREE POST: Woodlands Publishing
Reply Paid 8035, Glenmore Park 2745

**CLICK
HERE
NEXT**

GLOSSARY

BEGINNER'S TOOL KIT

PINS

Plastic-head pins are useful for checking tension and blocking out items. Pins with coloured heads are best because they do not get lost in your work.



ROW COUNTER

A row counter is helpful for keeping track of rows worked, particularly where increases, decreases or other kinds of patterning occur.



KNITTING IN ELASTIC

Elastic yarn prevents sagging in cuffs, collars and waists. You can work it in with knitting yarn on knitted or crocheted garments.



KNITTING NEEDLES

Knitting needles are made from plastic, aluminium or wood and come in varying lengths and widths. Straight needles come in pairs and doublepointed needles come in sets of four.



KNITTING BAG

A knitting bag is essential for those who like to knit 'on the go'. Not only is it a practical way to keep all your knitting paraphernalia together, it also helps keep the yarn clean and tangle-free.

CIRCULAR KNITTING NEEDLES

Circular needles have two working ends joined by a thin nylon wire. They are more balanced than straight needles and allow the weight of your work to rest in your lap.



TAPE MEASURE

A basic tape measure is essential for checking your garment measurements.

KNITTER'S NEEDLES

Knitter's needles need to have a large eye and a blunt point so they do not split stitches when sewing up your knitting.



STITCH GAUGE

A stitch gauge is a flat piece of metal or plastic with a ruler marked on one side and/or a window

cut out in the centre. It allows you to mark and measure easily and accurately.

STITCH HOLDER

A stitch holder is used to secure stitches not in use. You can also use safety pins for holding a small number of stitches.

Diagram 1

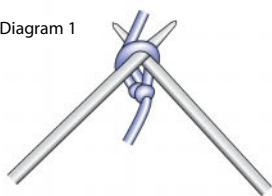
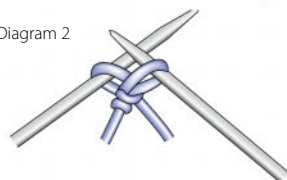


Diagram 2



CASTING ON

Casting on is creating a row of loops on a knitting needle to form the base row for your knitting. One of the most popular methods of casting on is the cable cast on. Form a slipknot about 25cm away from the end of the yarn.

Place the slipknot on a knitting needle and pull gently to secure. Hold this needle in your left hand. Insert the right-hand needle through the slip knot. Pass the yarn over the point of the right-hand needle (see Diagram 1).

Pull a loop through the slip knot with the right-hand needle (see Diagram 2). Place this loop on the left-hand needle and gently pull the yarn to secure the stitch. For the remaining cast-on stitches, insert the right-hand needle between the slip knot and the first stitch on the left-hand needle. Wind the yarn around the point of the right-hand needle. Draw a loop through and place this loop on the left-hand needle. Continue in this manner until you have cast on the desired number of stitches.

KNIT STITCH

Diagram 1

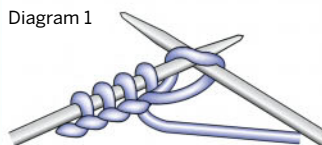


Diagram 2



Once you have cast on, you then knit into the stitches you have made to form the knitted fabric. Hold the needle with the cast on stitches in your left hand, with the loose yarn at the back of your work. Insert the right-hand needle from left to right through the front of the first stitch on the left-hand needle (see Diagram 1). Wind the yarn from left to right over the point of the right-hand needle (see Diagram 2). Draw the

yarn through the stitch to form a new stitch on the right-hand needle. Slip the original stitch off the left-hand needle, keeping the new stitch on the right-hand needle. To knit a row, repeat these steps until all the stitches have been transferred from the left-hand needle to the right-hand needle. Turn your work, transferring the needle with the stitches on into your left hand to work the next row.

PURL STITCH

Diagram 1

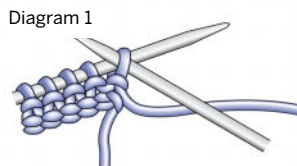
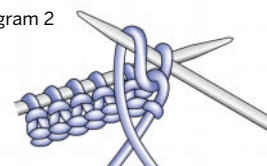


Diagram 2



The purl stitch is basically the reverse of the knit stitch. Hold the needle with the stitches on in your left hand, with the loose yarn at the front of your work. Insert the right-hand needle from right to left into the front of the first stitch on the left-hand needle (see Diagram 1). Wind the yarn from right to left over the point of the right-hand needle (see Diagram 2). Draw the yarn through the

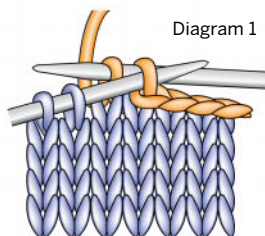
stitch to form a new stitch on the right-hand needle. Slip the original stitch off the left-hand needle, keeping the new stitch on the right-hand needle. To purl a row, repeat these steps until all the stitches have been transferred from the left-hand needle to the right-hand needle. Turn your work, transferring the needle with the stitches on into your left hand to work the next row.

CASTING OFF

KNITWISE

Knit two stitches. Use the point of the left-hand needle to lift the first stitch on the right-hand needle over the second, and drop it off the needle. Knit the next stitch on the left-hand needle so that there are two stitches on the right-hand needle again, and repeat. Continue in this manner until all the stitches have been worked off the left-hand needle and only one stitch remains on the right-hand needle. Cut the yarn, leaving a tail and thread the yarn through the loop and pull it firmly to fasten off.

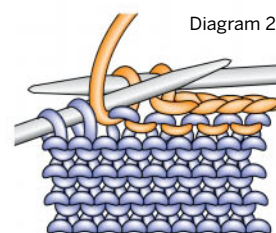
Diagram 1



PURLWISE

Purl two stitches. Use the point of the left-hand needle to lift the first stitch on the right-hand needle over the second, and drop it off the needle. Purl the next stitch on the left-hand needle so that there are two stitches on the right-hand needle again, and repeat. Continue in this manner until all the stitches have been worked off the left-hand needle and only one stitch remains on the right-hand needle. Secure this last stitch as described in casting off knitwise.

Diagram 2



SUBSTITUTING YARNS

If you substitute or spin a yarn for a project, you can compare the weight of the yarn to the project yarn by comparing wraps per inch. Wrap your yarn around a ruler for one inch and count the number of wraps. If you have more wraps per inch than the project yarn, your yarn is too thin; if you have fewer wraps per inch than the project yarn, your yarn is too thick.



KNITTING TENSION

Checking your knitting tension, that is, the tightness or looseness of your knitting, is important. To check your tension, cast on 30 stitches using the recommended needle size. Work in the pattern until your work measures 10cm from the cast on edge then cast off. You now have a "swatch". Measure your tension by placing a ruler over your swatch and counting the number of stitches

across and rows down (including fractions of stitches and rows) in 10cm. Repeat these measurements two to three times on a different parts of the swatch to check your measurements. If you have more stitches and rows than called for in the instructions, you should use larger needles; if you have fewer, use smaller needles. Check your tension again before starting your project.

PROVISIONAL CAST ON (INVISIBLE CAST ON)

Place a loose slipknot on the needle in your right hand. Hold the waste yarn next to the slipknot and around your left thumb. Hold your working yarn over your left index finger.

*Bring the needle forward under the waste yarn, over the working yarn, grab a loop of working yarn (Diagram

1), then bring the needle to the front, over both yarns, and grab a second loop (Diagram 2). Repeat from * until you have the desired number of stitches on your needle. When you're ready to work in the opposite direction, pick out the waste yarn to expose the live stitches.

Diagram 1

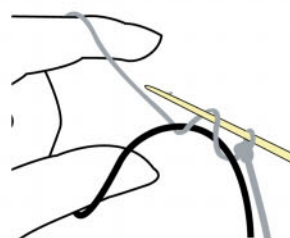


Diagram 2

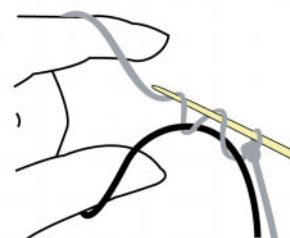
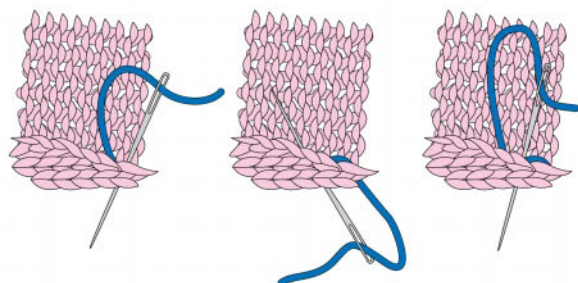


Diagram 1



BACKSTITCH

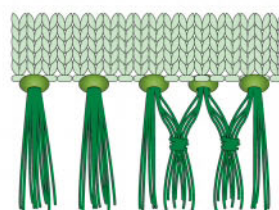
This is the stitch most commonly used for joining knitted garments. With the right sides of your work together, pin the knitted fabric together with the edges even. The seam should be sewn one full stitch from the end of the row. One stitch should be worked over every row. Thread the yarn needle. Insert the needle through both layers and sew two stitches to the left then one stitch back to the right. Keep stitches at an even distance. Continue working from right to left in this circular motion. (Diagram 1)

TASSELS

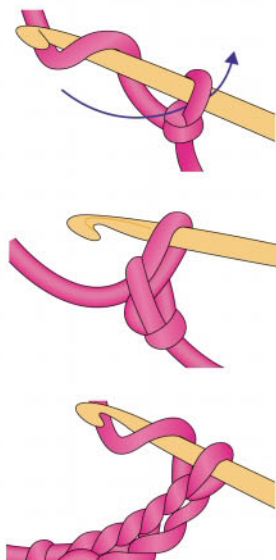
Cut yarn twice the length of your desired tassel plus a bit extra for the knot. According to the desired thickness of the tassel, select a number of lengths of yarn. Fold the lengths of yarn in half over a crochet hook. On the wrong side, insert the crochet hook from the front to the back through the edge of the work. Grab the yarn and pull through and tighten. Trim the ends to the same length.

KNOTTED FRINGE

After working a tassel, take one half of the strands from each tassel and knot them with half the strands from the neighbouring tassel. Trim.

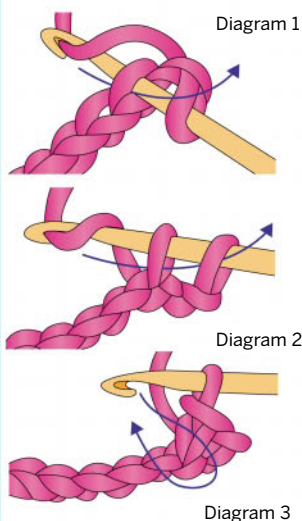


CROCHET CHAIN



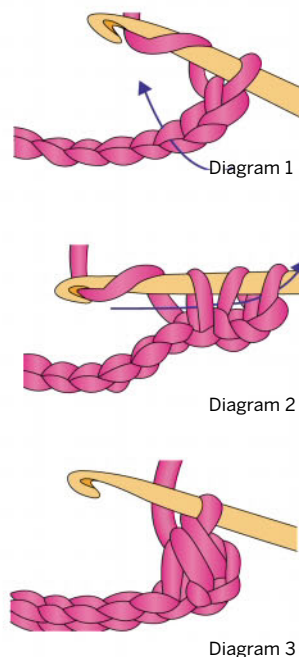
Make a slip knot on your hook. Pass the yarn over the hook and catch it with the hook and draw it through the loop on the hook. Repeat, drawing yarn through the last loop formed.

DOUBLE CROCHET (DC) (US SINGLE CROCHET SC)



Insert the hook through the top two loops of a stitch. Pass the yarn over the hook and draw up a loop so that you have two loops on the hook (Diagram 1). Pass the yarn over the hook and draw through both loops on the hook (Diagram 2). Continue in the same way, inserting the hook into each stitch (Diagram 3).

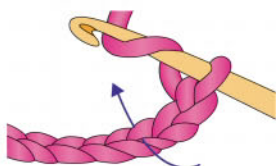
HALF TREBLE CROCHET (HTR) (US HALF DOUBLE CROCHET HDC)



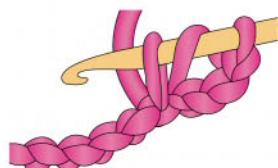
Pass the yarn over the hook. Insert the hook through the top two loops of a stitch (Diagram 1). Pass the yarn over the hook and draw up a loop so that there are three loops on the hook (Diagram 2). Draw through all three loops on the hook (Diagram 3).

TREBLE CROCHET (TR) (US DOUBLE CROCHET DC)

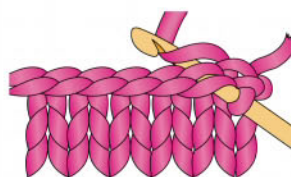
Diagram 1



Pass the yarn over the hook. Insert the hook through the top two loops of a stitch (Diagram 1). Pass the yarn over the hook and draw up a loop so that you have three loops on the hook (Diagram 2). Pass the yarn over the hook and draw it through the first two loops on the hook, pass the yarn over the hook and draw through the remaining two loops. Continue in the same way, inserting the hook into each stitch (Diagram 3).



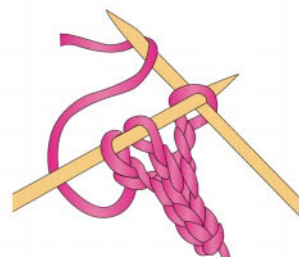
SLIP STITCH CROCHET (SL ST)



Insert your hook into the stitch. Yarn over the hook and draw the loop through the stitch and loop onto the hook.

I-CORD

With double-pointed needles, cast on the desired number of stitches. *Without turning the needle, slide the stitches to the other end of the needle, pull the yarn around the back and knit the stitches as usual. Repeat from * until your work measures the desired length



PICKING UP DROPPED STITCHES

A dropped stitch can be picked up using a crochet hook and don't be put off by stitches that have unraveled several rows down into the work. To pick up knit stitches, insert the crochet hook into the dropped stitch, draw through the bar lying above the dropped stitch and pull it through the loop of the dropped stitch.

KNITTING ABBREVIATIONS

Alt - Alternate; alternately	P2tog - Purl two stitches together
Beg - Begin; begins; beginning	Patt - pattern
CC - Contrasting colour	Psso - Pass slipped stitch over previous stitch
Ch - Chain	Pb - Purl through the back of the stitch
Cm - Centimetre/s	Pwise - Purlwise
CO - Cast on	Rem - Remaining
Cont - Continue; continuing	Rep - Repeat
Dec - Decrease; decreasing	Sl 1 - Slip one stitch across from left needle to right needle without knitting it.
Dk - Double Knitting	Sl 1 Purlwise - Slip next stitch off left needle onto right as if to purl the stitch.
Foll - Follow; follows; following	Sts - Stitches
G st - Garter stitch. If knitting back and forth, knit every row. If knitting circularly, one round knit, next round purl.	St st - Stocking stitch. If knitting back and forth, one row knit, next row purl. If knitting circularly, knit each round.
Inc - Increase; increasing	SSK - Slip, slip knit. Makes a left slanting decrease. Slip two stitches knitwise, on at a time from the left to the right needle, then knit them together through their backs.
Incl - Including	Tog - Together
K - Knit	WS - Wrong side
K1 - Knit one stitch	Ybk - Yarn back
K2tog - Knit two stitches together	Y fwd - Yarn forward - bring yarn under the needle, then over to the knitting position again, creating a new stitch.
Kb - Knit through the back of the stitch	Yo - Yarn over.
Kwise - Knitwise	
M - Make one stitch	
MC - Main colour. When two or more colours are used, the main colour is the yarn that is dominant.	
P - Purl	
P1 - Purl one stitch	

CROCHET TERMS & ABBREVIATIONS

approx	approximately		together or skipping the stitches.
beg	begin(ning)		
CC	contrast colour	foll	follow(s)(ing)
ch	chain(s)	gm	grams
cm	centimetre(s)	htr	half treble crochet (US half double crochet hdc)
cont	continue(ing)		
dc	double crochet (US single crochet sc)	inc	increase(ing). Add stitches in a row by working in extra stitches into a chain or between the stitches.
dec	decrease(ing). Reduce the stitches in a row by either working the stitches		

CROCHET TERMS & ABBREVIATIONS CONTINUED ...

LH	left-hand	sl st	slip stitch
lp(s)	loop(s)	sp(s)	space(s)
m	metre(s)	st(s)	stitch(es)
MC	main colour	t-ch	turning chain
mm	millimetre	tog	together
oz	ounces	tr	treble (US dc)
pat(s)	pattern(s)	WS	wrong side
pm	place markers. Place or attach a loop of contrast yarn or a stitch marker as indicated.		work even/work straight. Continue in the pattern without increasing or decreasing
rem	remaining	yd	yards
rep	repeat	yo	yarn over. Wrap the yarn around the hook
rnd(s)	round(s)	*	repeat the directions following * as many times as indicated
RH	right-hand		
RS	right side		
sk	skip, miss		

CROCHET HOOKS

METRIC	US
.60mm	14 steel
.75mm	12 steel
1.00mm	10 steel
1.50mm	6 steel
1.75mm	5 steel
2.00mm	B/1
2.5mm	C/2
3.00mm	D/3
3.50mm	E/4
4.00mm	F/5
4.50mm	G/6
5.00mm	H/8
5.50mm	I/9
6.00mm	J/10
6.50mm	K
7.00mm	K/10.5
	P
	Q
	S

KNITTING NEEDLES

METRIC	UK	US
2mm	14	0
2.25mm	13	1
2.5mm		
2.75mm	12	2
3mm	11	
3.25mm	10	3
3.5mm		4
3.75mm	9	5
4mm	8	6
4.5mm	7	7
5mm	6	8
5.5mm	5	9
6mm	4	10
6.5mm	3	10.5
7mm	2	
7.5mm	1	
8mm	0	11
9mm	00	13
10mm	000	15

© Creative Knitting

All work in Creative Knitting is protected by copyright. A single pattern or chart may be reproduced for personal, nonprofit use. Patterns and charts may not be reproduced to sell or distribute to others. Patterns may not be reproduced on letterhead, with another designers name attached or on the internet. Patterns may not be reproduced for classes or groups without the express permission of the publisher. Items produced using patterns may not be sold with any name other than that of the pattern designer. Contact Woodlands Publishing Pty Ltd for further information on copyright.

Business Directory



the-wool-inn.com.au
penrith nsw 02 4732 2201

Banksia Yarns

Shop 7 Magnolia Mall
285 Windsor St
Richmond NSW

0401 279 853

shop@banksiayarns.com.au
www.banksiayarns.com.au




PH 0417 399 565
info@knitalpaca.com.au
www.knitalpaca.com.au

Knitalpaca Knit yourself some luxury—naturally



Luxurious natural fibres
in gorgeous yarns, all
made in Australia



Janique of Chelsea

CRAFT SUPPLIES • GIFTS • HOMEWARES • FASHION

Specialising in:

- Knitting yarn and needles
- Tapestries and threads
- Haberdashery, beads, trims and accessories

We have the highest quality products and advice for our customers

402 Nepean Hwy, Chelsea Vic 3196
Ph: 03 9776 1155 Fax: 9585 5141

CLECKHEATON • FILATURA • NATURALLY • PANDA • PATONS • WENDY

CROSSWAYS Wool & Fabrics

Shop 15, Crossways Shopping Centre
Corner of Bagot and Rokeby Road
Subiaco WA 6008

As you enter Crossways Wool & Fabrics you enter another world, an exciting world, of colour and texture. Knitting and crochet haberdashery and embroidery supplies are all here in this wonderful store. If you want a ball of yarn, a button, a metre of elastic or just help with your project, come and see our friendly and knowledgeable staff who are always on hand to help you.

(08) 9381 4286

Associated with 'Yarns of Collie' of Freemantle
Email: sales@woolshop.com.au
Visit our website: www.woolshop.com.au



STITCH 'N TIME

QUALITY YARNS

- PATONS • SIRDAR • WENDY
- CLECKHEATON • JO SHARP
- HEIRLOOM • NATURALLY
- NATURAL & ITALIAN YARNS
- PATTERNS & ACCESSORIES

READY MADE KNITWEAR

- KNITTING CLASSES

Made to measure Orders Welcome

- HABERDASHERY
- TAPESTRIES • EMBROIDERY

02 6282 8383

2/55 Colbee Court Phillip ACT 2606



A/Y

EMPOWERING WOMEN AND COMMUNITIES
SUSTAINING TRADITIONAL CRAFTS
CREATING BEAUTIFUL THINGS

WWW.ALTYARN.COM

CHOOSING ETHICAL, ENVIRONMENTAL, FAIR
SOURCING ALTERNATIVE PRODUCTS
SHARING EXTRAORDINARY YARNS



Barb's Sew and Knits

2 Byron Street Glenelg Sth Aust 5045

Specialising in
Australian and Imported wool & yarns
plus Knitting Machine sales and service




www.barbssewandknits.com.au Phone Barb: 08 8294 7441

Australian Knitting Vol 7 No 4

- Patterns to knit for summer
- Easy to follow instructions
- Insight into the latest fashion
- Full of knitting tips and techniques

ON SALE 12 NOVEMBER 2015



PUBLISHER Simon Mullen

CREATIVE DIRECTOR Hayley Jagger

PRODUCTION EDITOR Deborah Gibbons

TECHNICAL EDITOR Annlee Butler

SUB EDITOR Anita Mullen

PHOTOGRAPHER Alex Mullen

STYLIST Hayley Jagger

EDITORIAL ENQUIRIES

Phone: 02 4733 8482 Fax: 02 4733 8583

Email: simon@wpco.com.au

NATIONAL ADVERTISING MANAGER

Simon Mullen 02 4733 8482 Fax: 02 4733 8583

Email: simon@wpco.com.au

ADVERTISING COORDINATOR

Anita Mullen

Email: anita@wpco.com.au

ADVERTISING ENQUIRIES

Phone: 02 4733 8482

Email: anita@wpco.com.au

SUBSCRIPTION ENQUIRIES Danielle Ryan

Phone: 02 4722 2260 Fax: 02 4733 8583

Email: subs@wpco.com.au

Website: www.wpco.com.au

For back issues call 02 4722 2260

RETAIL SALES/OVERSEAS DISTRIBUTION ENQUIRIES

Simon Mullen

Email: simon@wpco.com.au

PUBLISHED BY

Published, promoted and distributed by

Woodlands Publishing Pty Ltd (ACN 115 093 162).

All rights reserved.

Woodlands Publishing Pty Ltd

PO Box 8035 Glenmore Park NSW 2745

Woodlands Publishing Pty Limited has taken reasonable steps to secure the copyright in the articles and photographs reproduced in this publication. We secure from each article's author a warranty that the copyright subsisting in the article is the author's original work, or the author has obtained all necessary rights, licences and permissions, and publishing it in this publication will not infringe any third party's copyright. Articles are published relying on the representations and warranties of the authors of the articles and without our knowledge of any infringement of any third party's copyright. All material in this magazine is copyright and cannot be reproduced in part or in full without written permission from the publisher. Prices and dates quoted in this issue were correct at the time of going to press but may be subject to variation.

Ashford Tekapo Yarn

29 beautiful solid shades



5 co-ordinating random shades



Ashford Tekapo yarn is available in 8 ply double knit and 12 ply Triple Knit. Lofty and bulky it is perfect for all your knitting, crochet, weaving and knit/felt projects.

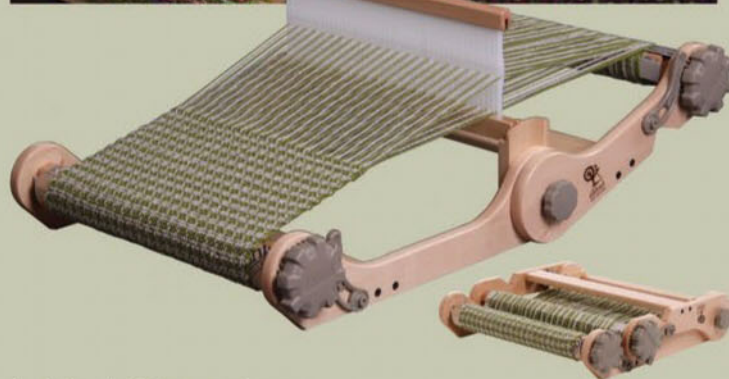
Great value and available in solid and co-ordinating random shades.

8 Ply Double knit

- 200m/218yds
- 100gm ball

12 Ply Triple knit

- 134m/146yds
- 100gm ball



Ashford Knitters Loom

Convenient, portable and easy to use. A great way to use your yarn stash and create exciting projects. The perfect loom to weave Ashford Tekapo yarn on.

Loom includes everything you need to start weaving and step-by-step colour instructions.

Just add yarn!

Available from all good yarn stores in Australia and New Zealand. New stockist enquiries welcome.

Australia 1 800 653 397 New Zealand 0508 459 459

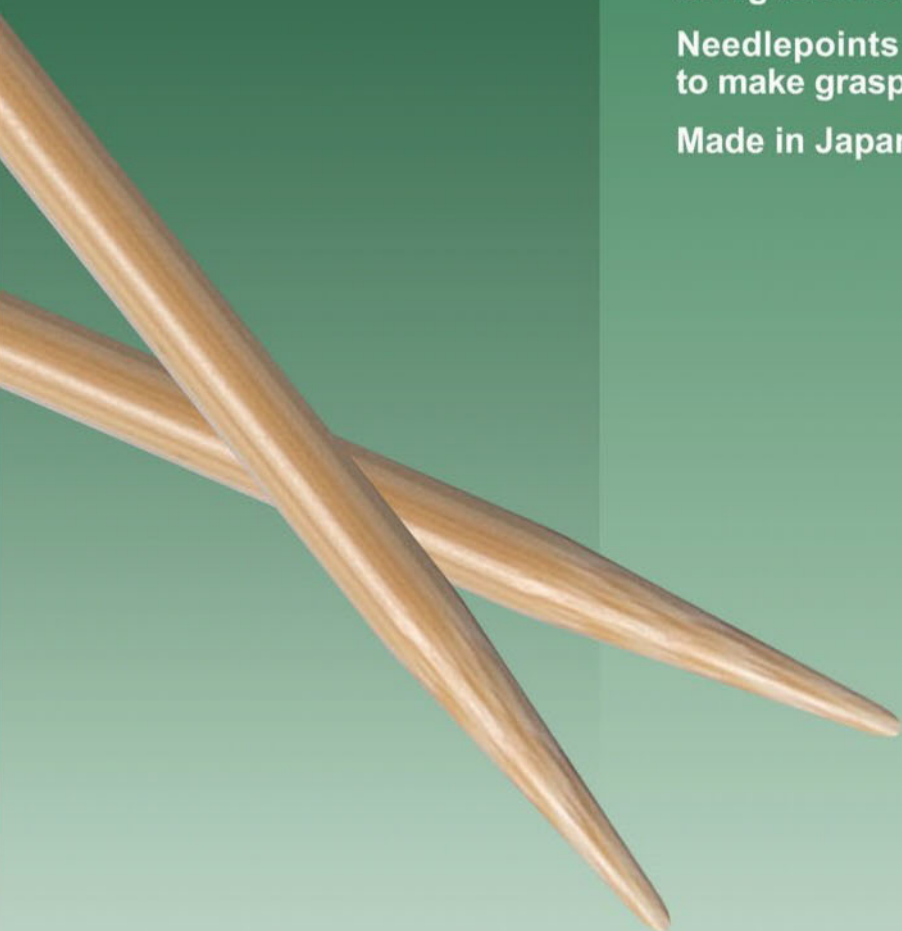
To locate your local stockist and download free patterns visit our website www.ashford.co.nz

**CLICK
HERE
NEXT**



匠

Takumi®



A blissful knitting experience.

**“Takumi®”
bamboo knitting needles.**

Carefully select materials cultivated in cold climates.

A lovely, smooth surface painstakingly refined using technology with a natural touch.

Needlepoints crafted with the utmost precision to make grasping and weaving threads a breeze.

Made in Japan

